



# **SOUTH AUSTRALIAN ECONOMIC INDICATORS**

EMBARGO: 11:30 AM (CANBERRA TIME) TUES 1 JUNE 1999

## **C O N T E N T S**

	<i>page</i>
Notes.....	2
REVIEW	
South Australian overview .....	3
State accounts .....	3
International accounts .....	5
Consumption and investment .....	6
Production .....	8
Prices.....	10
Labour force and demography .....	13
Incomes .....	16
Financial markets .....	17
Forward outlook .....	20
TABLES	
List of tables .....	23
ADDITIONAL INFORMATION	
Publications source index .....	47

- For further information about these and related statistics, contact Bethany Fenech on Adelaide 08 8237 7332, or any ABS office shown on the back cover of this publication.

## NOTES

### FORTHCOMING ISSUES

ISSUE	RELEASE DATE
July 1999	1 July 1999
August 1999	2 August 1999
September 1999	1 September 1999
October 1999	1 October 1999
November 1999	1 November 1999
December 1999	1 December 1999

### ABOUT THIS PUBLICATION

*South Australian Economic Indicators* is a monthly publication which contains the latest available data at the time of preparation for a range of statistical series that have been identified as indicators of economic activity in this State. In a number of cases the figures presented are preliminary and subject to revision in subsequent issues.

### CHANGES IN THIS ISSUE

There are no changes in this issue.

### SYMBOLS AND OTHER USAGES

n.a.	not available
n.y.a.	not yet available
*	subject to sampling variability too high for most practical purposes
..	not applicable
0, 0.0	nil or rounded to zero

### ROUNDING

Where figures have been rounded, discrepancies may occur between sums of the component items and totals.

### INFORMATION

More detailed information on each series, including explanatory and technical notes, can be obtained from other Australian Bureau of Statistics publications or alternative data sources. To assist those seeking further information a source publication for each of the series has been documented in the statistical summary.

I. Crettenden  
Regional Director  
South Australia

# REVIEW

---

## SOUTH AUSTRALIAN OVERVIEW

- The value of merchandise exports, where the final stage of production was in South Australia was \$546.3m in March 1999, a 34.3% increase from February 1999. The value of merchandise imports released from Customs control in South Australia increased to \$349.9m in March 1999. This represents a 15.9% increase from February 1999.
- The trend estimate growth rate of retail turnover was 0.6% for March 1999.
- The trend for new motor vehicle registrations increased by 0.8% from February 1999. This is the second consecutive increase after a seven month decline since the June record high (4,679).
- The trend for total dwelling unit approvals increased 1.6% to 664 in March 1999, continuing the growth evident since December 1998.
- The Consumer Price Index (all groups) in Adelaide fell 0.7% from the December quarter 1998 to be 122.7 in the March quarter 1999.
- In February 1999 there were 10,400 short-term overseas visitor arrivals to South Australia. This represents an increase from both January 1999 and February 1998, up 20.0% and 8.8% respectively.
- The latest trend estimate of employed persons in South Australia (657,300) is 2.9% higher than the level of 12 months ago (639,000).
- The trend estimate of the unemployment rate in South Australia has decreased in recent months, reaching 8.7% in April 1999.
- A total of 800 working days were lost through industrial disputation in February 1999, an increase from January 1999 where no working days were lost.
- In March 1999 the trend estimate for the value of new housing commitments (excluding alterations and additions) increased for the sixth consecutive month, up 1.8%.

## STATE ACCOUNTS

### Trend (Chain volume measures)

State final demand (SFD) increased 0.2% in the December quarter 1998. After reaching a peak of 2.3% for the September quarter 1997, growth in SFD steadily declined to 0.2% and has remained close to this rate for the past three quarters. The decline in SFD over this period is due mainly to a fall in private gross fixed capital expenditure. The national trend increased by 1.1% for the December quarter. Growth has remained constant at this rate for the past four quarters. The national growth rate continued to exceed the SFD growth rate over the same period.

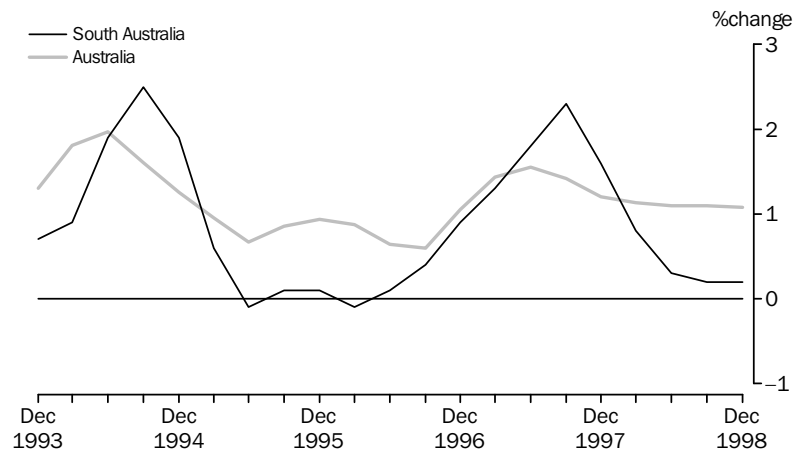
Growth through the year to December quarter 1998 was 1.5% compared with the national rate of 4.5%. Only Tasmania and Western Australia recorded lower increases for this period.

Contributing to the growth of SFD was a 0.9% increase in household final consumption expenditure, offset by a 5.2% fall in the growth rate of private gross fixed capital expenditure (due mainly to a 11.3% fall in other buildings and structures and a 6.6% fall in plant and machinery). Public final demand increased by 1.6%.

Trend (Chain volume measures) *continued*

The 0.9% growth in private household final consumption expenditure compares with the national rate of 1.3%. South Australia has now fallen below the national rate for the past two quarters after exceeding the national rate for four consecutive quarters. Annual growth to the December quarter was 4.3%, compared with the national rate of 4.2%.

State final demand: **Trend** (Chain volume measures ) (a)



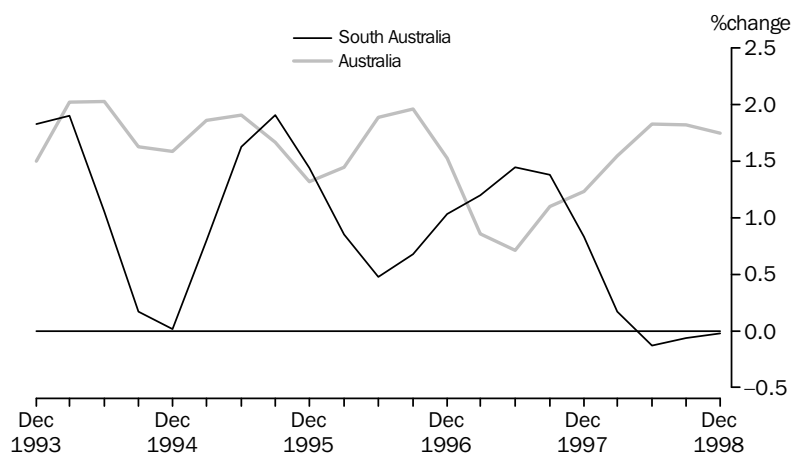
(a) Quarterly changes

Trend (Current prices)

There was no growth in compensation of employees for the December quarter. The national rate was 1.8%.

Growth through the year to December quarter was also zero, significantly below the national rate of 7.1%. South Australia was the only State not to record an increase and has now been below the national rate for the past five quarters.

Compensation of employees: **Trend** (Current prices) (a)



(a) Quarterly changes

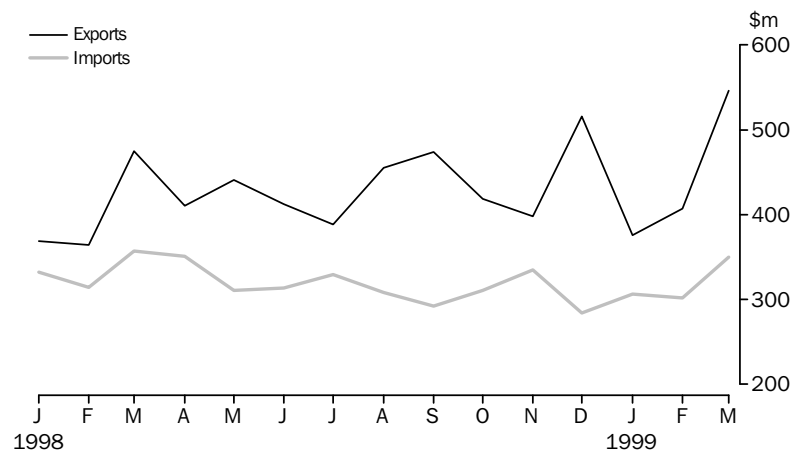
INTERNATIONAL ACCOUNTS

Merchandise exports

The value of merchandise exports, where the final stage of production was in South Australia, was \$546.3m in March 1999. This represents an increase from both February 1999 and March 1998, up 34.3% and 15.1% respectively. Road vehicles, parts and accessories recorded a large increase in March 1999, rising \$78.1m to \$101.4m. Other categories to experience increases were cereal and cereal preparations (\$29.7m), wine (\$14.3m) and metals and metal manufactures (\$10.3m). Small reductions were recorded in meat and meat preparations, wool and sheepskins and fish and crustaceans.

In March 1999 the major destination for South Australian exports was the Middle East, with an export value of \$86.7m. All major trading partners recorded an increase from the previous month except Hong Kong, which fell 17.3% to \$17.5m. The largest increase was recorded for the United States of America, up \$49.9m (150.8%) to \$83.0m. Exports to the United Kingdom rose \$15.0m, significantly contributing to the \$15.7m rise in exports to the European Union, while exports to East Asia increased 16.4% to \$179.5m.

Merchandise exports and imports



Merchandise imports

The value of merchandise imports released from Customs control in South Australia increased to \$349.9m in March 1999. This is a 15.9% increase from February 1999 and a 2.0% fall from the same time last year. Of published commodity groups, petroleum and petroleum products recorded the only reduction from last month, down 18.4% (\$5.8m) to \$25.7m. The largest increases were recorded for other manufactured goods, rising \$23.4m (41.5%) to \$79.7m and road vehicles, parts and accessories, up 13.4% to \$78.0m.

CONSUMPTION AND INVESTMENT

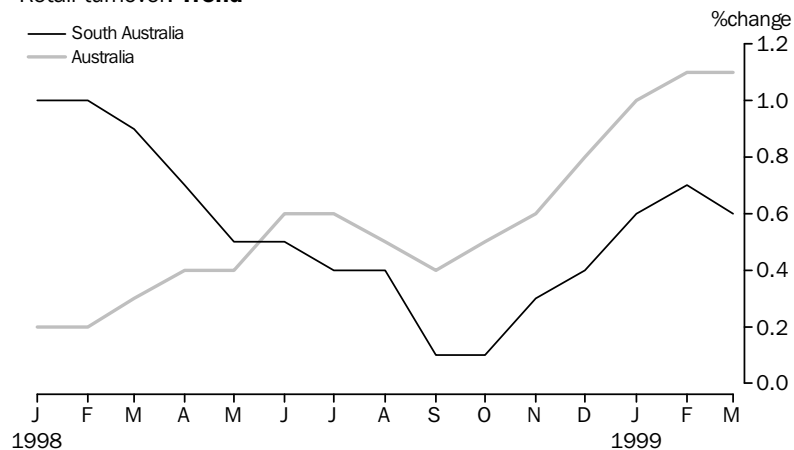
Retail turnover

The trend estimate growth rate of retail turnover was 0.6% for March 1999. Clothing and soft good retailing recorded the strongest growth for the period (1.3%). Household good retailing and recreational good retailing recorded negative growth rates for the period, -0.6% and -0.9% respectively. All other groups recording positive growth rates.

Over the three month period to March 1999, the trend estimate has increased by \$17.6m to \$904.9m. The major contributor to this increase was the food retailing group (\$11.1m), followed by other retailing (\$2.8m). All other groups except household good retailing and recreational good retailing recorded small increases over the three month period.

In original terms, retail turnover for March 1999 was \$885.3m. This was an increase of 13.5% from February 1999 and 9.2% from the same time last year. Similar results were recorded nationally, with retail turnover increasing when compared with the previous month and the same time last year, up 11.8% and 10.8% respectively. South Australia accounted for 7.4% of the Australian total.

Retail turnover: **Trend**



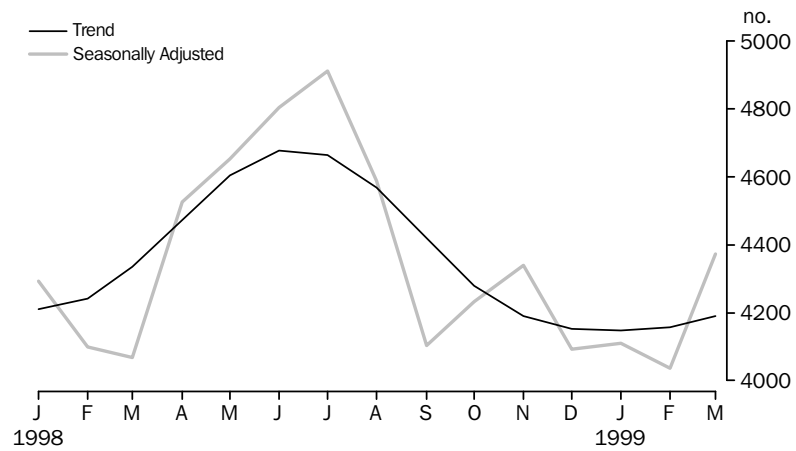
New motor vehicle registrations

The trend for new motor vehicle registrations increased by 0.8% from February 1999. This is the second consecutive increase after a seven month decline since the June record high (4,679).

In original terms new motor vehicle registrations increased 22.6% to 4,809 in March 1999. This was the result of an increase in registrations of both passenger and other vehicles, up 24.1% and 13.4% respectively. Leading makes of passenger vehicles in South Australia were Holden (885), Ford (733), Mitsubishi (664), Toyota (576), Hyundai (303), Nissan (167) and Honda (120).

There were 76,232 new motor vehicles registered Australia wide in March 1999. This was a 26.4% increase from last month and an increase of 11.6% from March 1998.

New motor vehicle registrations

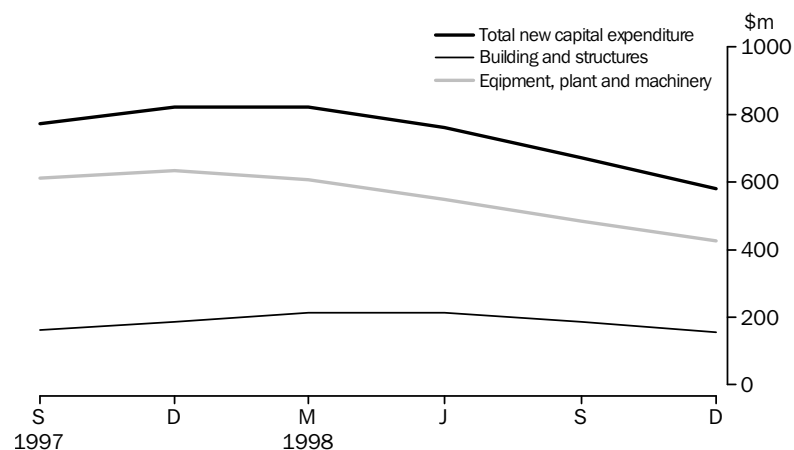


Private new capital expenditure

The trend estimate at current prices for private new capital expenditure for the December quarter 1998 fell 13.7% from the previous quarter to \$581.0m. Expenditure on buildings and equipment both decreased, down 16.6% and 12.4% respectively. When compared with the December quarter 1997, total expenditure has fallen by 29.3% (\$241.0m). Expenditure on buildings has decreased by \$31.0m (16.6%) and equipment fell by \$210.0m (33.1%).

In original terms, private new capital expenditure increased to \$665.0m for the December quarter 1998, a rise of 10.6% from the previous quarter (\$601.0m). Equipment, plant and machinery accounted for \$495.0m and building and structures \$170.0m.

Private new capital expenditure, type of asset: **Trend**



Tourist accommodation

The number of rooms and units available in licensed hotels, motels and guest houses, and serviced apartments with 15 or more rooms or units increased 3.8% in the December quarter 1998 compared with the December quarter 1997. The room occupancy rate increased from 59.9% to 60.8%. Takings for all accommodation types increased when compared with December quarter 1997, with total takings increasing from \$45.4m to \$49.8m. Average takings per room night occupied rose from \$85.00 to \$88.60.

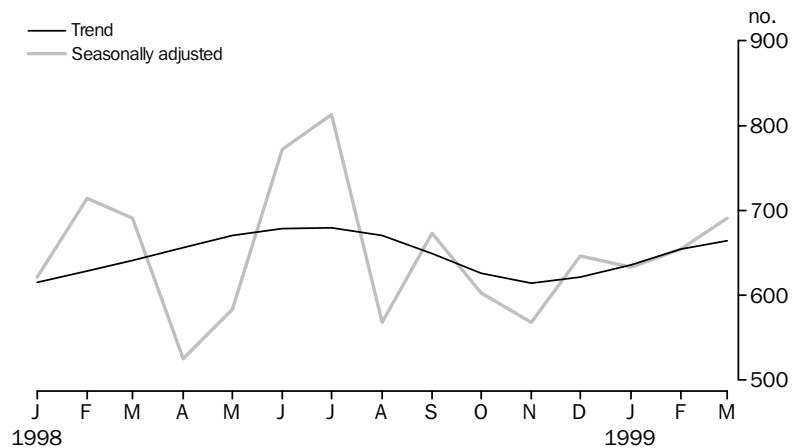
**PRODUCTION**

Building approvals

The trend for total dwelling units continued to grow strongly with an increase of 8.2% over the last four months. In original terms, 750 dwelling units were approved in March 1999, an increase of 23.6% on the previous month. Total dwelling units approved for Australia also increased from February 1999, up 8.1%. South Australia accounted for 5.8% of total dwelling units approved.

In March 1999 the value of total building approvals fell by 26.0% from February 1999. This can be largely attributed to a fall of more than 50.0% in the value of non-residential building approvals (February 1999 included a single shop project of \$64.0m). The major contributors to the value of non-residential building this month were other business premises (\$17.7m), education (\$11.6m) and offices (\$10.1m). For residential building the value of approvals rose by 18.6% to \$83.7m.

Dwelling units approved

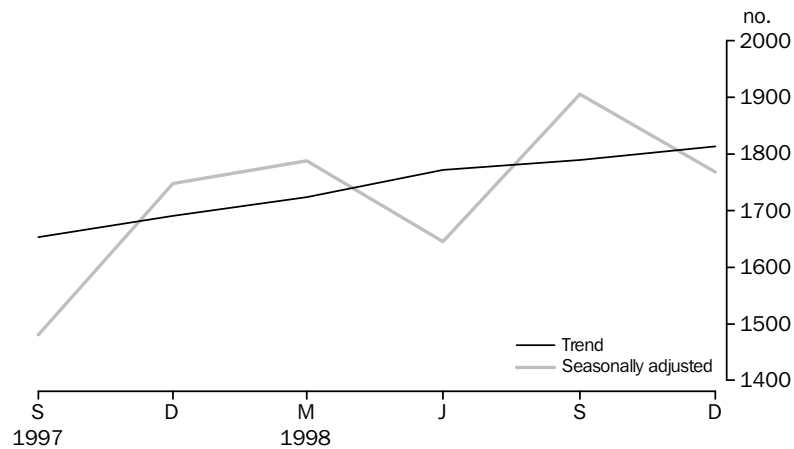




Building activity

For the December quarter 1998, the trend for total number of dwelling units commenced increased from both the September quarter 1998 and December quarter 1997, up 1.3% and 7.3% respectively. Corresponding national figures show a fall of 2.3% from the previous quarter and an increase of 0.3% from the same time last year. In original terms, there were 1,932 dwelling units commenced in the December quarter 1998, a fall of 2.4% (48) from the previous quarter. South Australia accounted for 5.3% of all dwelling unit commencements for the quarter.

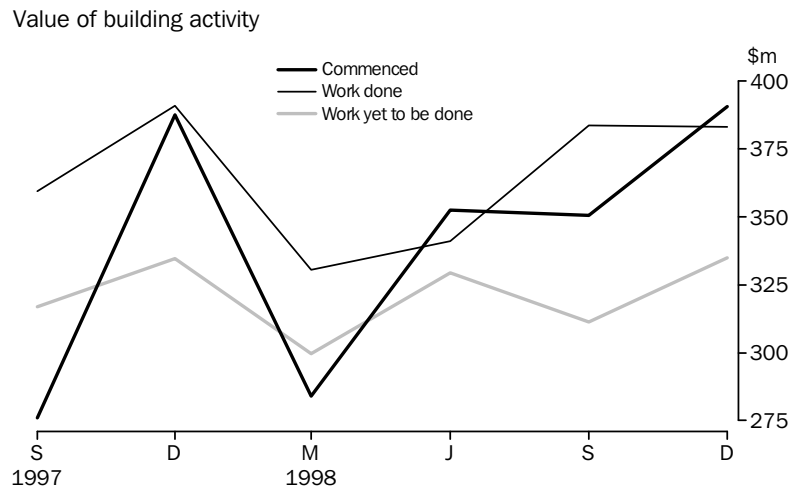
Dwelling units commenced



The value of total building work commenced increased 11.4% (\$39.9m) from the September quarter 1998 to \$390.6m for the December quarter 1998. This was the result of an increase in the value of new residential building, up 23.4%. This was partially offset by a fall in the value of non-residential building, down to \$128.9m in the December quarter 1998 from \$131.1m the previous quarter.

South Australia was one of only two States to record a reduction in the total value of building work done in the December quarter 1998, down 0.2% to \$383.0m. This was the result of a 3.5% (\$5.7m) fall in the value of total non-residential building, offset by a 2.3% increase in the value of total residential building. Nationally, there was a 5.6% increase in the value of building work done in the December quarter 1998.

The value of building work yet to be done at the end of the December quarter 1998 was \$334.9m. This was an increase of 7.6% on the figure at the end of September quarter 1998 and accounted for 2.6% of the corresponding national figure.



Engineering construction

The value of engineering construction work done in the December quarter 1998 increased by 0.6% to \$245.9m. In comparison, the value of work done Australia wide increased by 7.1%. South Australia accounted for 5.3% of the national figure, lower than the 7.2% recorded in the same period the previous year. The value of work commenced during the December quarter 1998 rose 15.7% to \$205.3m, similar to the national increase of 14.3%. Major contributors to value of work commenced during the period were Roads, highways and subdivisions (\$62.9m), Oil, gas, coal and other minerals (\$37.2m) and Electricity generation, transmission and distribution (\$35.7m).

PRICES

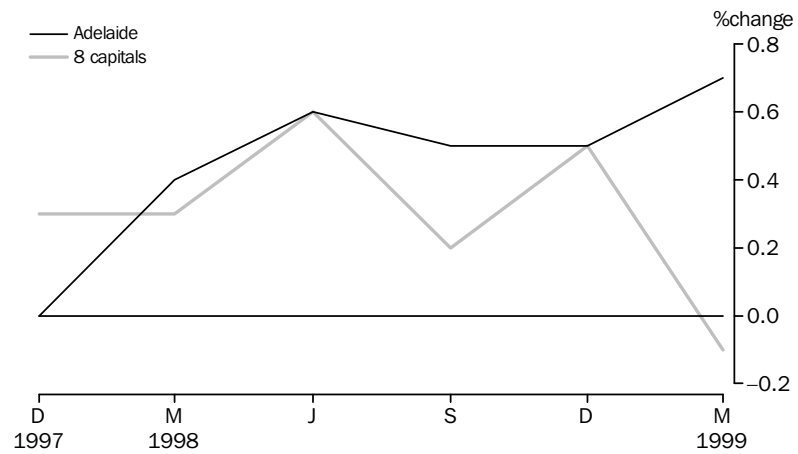
Consumer Price Index

The Consumer Price Index (all groups) in Adelaide fell 0.7% from the December quarter 1998 to be 122.7 in the March quarter 1999. The major groups contributing to this fall were health and personal care, clothing and household equipment and operation. Transportation and food also recorded small reductions for the period while recreation and education, housing and tobacco and alcohol recorded increases.

When compared with the March quarter 1998, the index has shown a 0.8% increase.

The Consumer Price Index for the weighted average of eight capital cities fell 0.1% from the December quarter 1998 and rose 1.2% compared with the same time last year.

Consumer price index

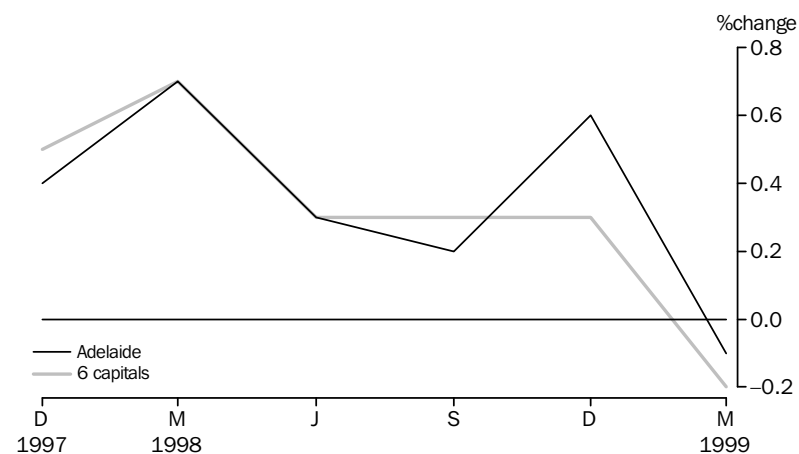


House building materials index

The Price Index of Materials used in House Building fell by 0.1% for the March quarter 1999 in Adelaide. Structural timber recorded an increase in price for the period while plastic pipes and fittings had a price reduction. Adelaide was the only city in which the price of plastic pipes and fittings fell. The weighted average of the six State capitals fell by 0.2% over the same period.

In the 12 months to the March quarter 1999 Adelaide recorded a rise of 1.1% in the Index, higher than the 0.7% increase recorded for the weighted average of the six State capitals over the same period.

Materials used in house building

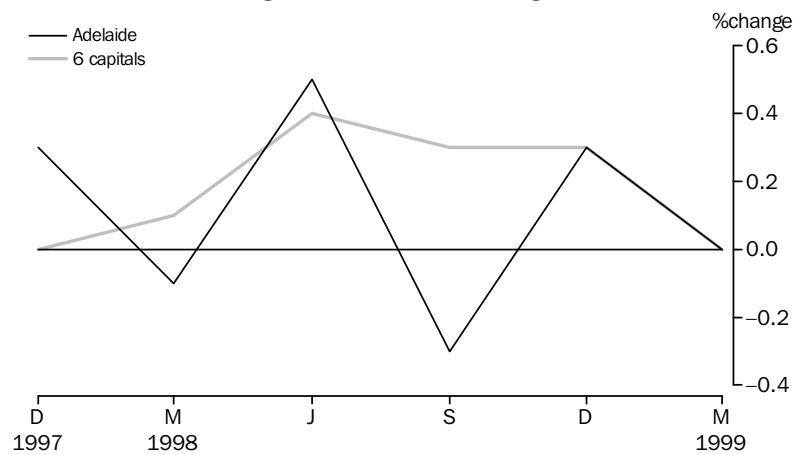


Non-house building materials index

The Price Index of Materials used in Building other than House Building showed no change in the March quarter 1999. Of selected major building materials, only paint and other coatings and structural steel recorded increases. Materials to record reductions included structural timber, clay bricks, ready mixed concrete, non-ferrous pipes and fittings and carpet. The weighted average of the six State capitals also showed no change for the same period.

For the 12 months to the March quarter 1999, Adelaide recorded a 0.5% increase in the Index, while the weighted average of the six State capital cities rose by 1.0%.

Materials used in building other than house building



House prices indexes

The December quarter 1998 Price Index of Established Houses in Adelaide fell marginally from September quarter 1998, down 0.1% to 113.0. However, a comparison with the same period last year shows an increase of 2.0%. The weighted average of the eight capital cities index increased from September quarter 1998 and the December quarter 1997, up 1.7% and 6.4% respectively.

The Project Home Price Index increased 1.8% during the December quarter 1998 and 3.3% when compared with the same time the previous year. Nationally, the weighted average of the eight capital cities index also increased, rising 0.8% from the September quarter and 2.1% from the December quarter 1997.

Passenger transport cost index

The Passenger Transport Cost Index measures changes in the costs of operating a public transport passenger bus service in Adelaide. Costs covered include labour costs, leasing charges, registration and insurance, repairs and maintenance, fuel and overheads. The All Groups index number for December quarter 1998 is 112.4, up from 111.5 in the previous quarter. This rise is due to increases in fuel prices and parts for mechanical repairs. The prices for the other items in the index remained unchanged from the last quarter. The All Groups index number excluding Compulsory Third Party Insurance increased 3.3% from December quarter 1997 to December quarter 1998.

LABOUR FORCE AND DEMOGRAPHY

Population

At 30 September 1998 the estimated resident population of South Australia was 1,488,838. This was an increase of 1,544 persons from the June quarter and was due to a natural increase of 1,188 persons and a net migration gain of 356 persons.

Between 30 September 1997 and 30 September 1998 the population for South Australia grew by 0.5% compared with the Australian rate of 1.3%. In September 1998 South Australia represented 7.9% of the Australian population.

Short-term overseas visitor arrivals

There were 10,400 short-term overseas visitor arrivals to South Australia in February 1999, an increase of 20.0% from January 1999. A comparison with the same time last year shows a rise of 8.8%. South Australia accounted for 2.6% of national short-term visitor arrivals in February 1999.

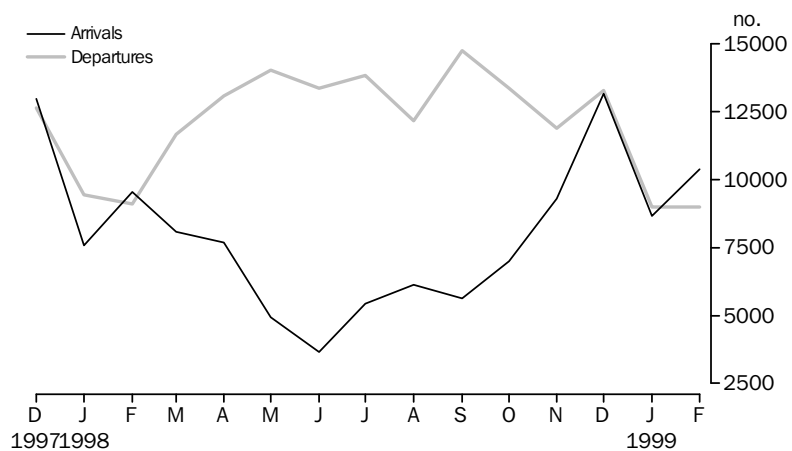
In February 1999 there were 398,600 short-term overseas visitor arrivals to Australia. This was a 13.6% increase from the previous month and the annual change was an increase of 12.7%.

Short-term resident departures

In February 1999 there were 9,000 short-term resident departures from South Australia. This represents a 0.1% increase from January 1999 and a 1.2% reduction from February 1998. South Australia accounted for 4.5% of all resident departures in January 1999.

Nationally there were 198,500 short-term resident departures in January 1999. This represents a 14.7% fall from the previous month and a 0.8% increase when compared with February 1998.

Short-term arrivals and departures

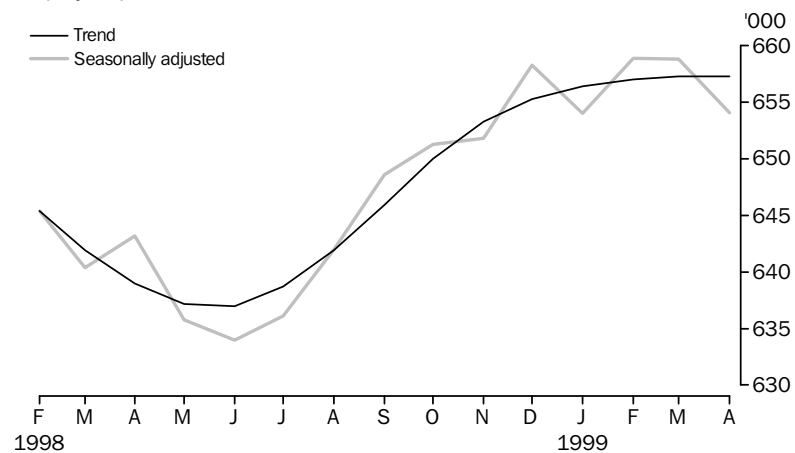


Employment

The trend estimate of employed persons in South Australia has generally increased since July 1998. The latest estimate (657,300) is 2.9% higher than the level of 12 months ago (639,000). Most of the recent increase has been in part-time employment, with the number of part-time employed persons increasing 5.4% since July 1998, compared with an increase of 2.0% in full-time employed persons over the same period.

The trend estimate of employed persons in Australia has increased for 23 consecutive months, reaching 8,711,200 in April 1999. The current estimate is 1.9% higher than the level of 12 months ago (8,552,400).

Employed persons



Labour force participation

The labour force participation rate expresses the labour force (or all employed and unemployed persons) as a proportion of the total population aged 15 and over. It measures the economically active or productive element within the working age population. The trend estimate of the labour force participation rate has been in decline since January 1999, after steadily increasing from July 1998. The current level in April 1999 (60.2%) is slightly lower than that of March 1999 (60.3%).

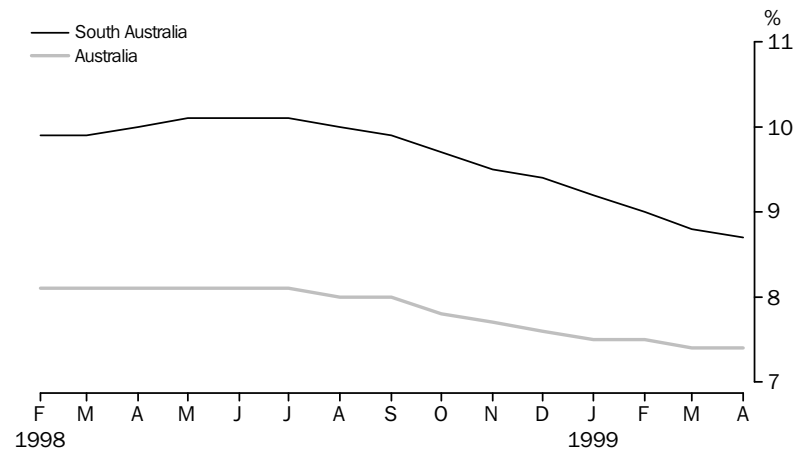
The trend estimate participation rate for Australia has been steady at 63.0% for the last three months, with the female rate falling 0.1 percentage point to 53.5% and the male rate not changing at 72.7%.

Unemployment

The trend estimate of the unemployment rate in South Australia has decreased in recent months, reaching 8.7% in April 1999. A year earlier, the rate was much higher at 10.0%. The trend for Australia has declined gradually in the 12 months to April 1999. The current rate (7.4%) is lower than the level observed in April 1998 (8.1%).

In original terms, the teenage full-time unemployment rate for South Australia was 27.1% in April 1999, down from the 36.2% recorded in March 1999. This does not mean that almost 3 in 10 of the State's 15–19 year olds are unemployed. The latest result indicates that 6,100 persons aged 15–19 were actively seeking full-time work out of a teenage, full-time labour force of 22,500. The majority of 15–19 year olds (77,800 out of 100,300) were unavailable for full-time work. This group includes students, both tertiary and secondary, and those in the part-time labour force.

Unemployment rates: **Trend**



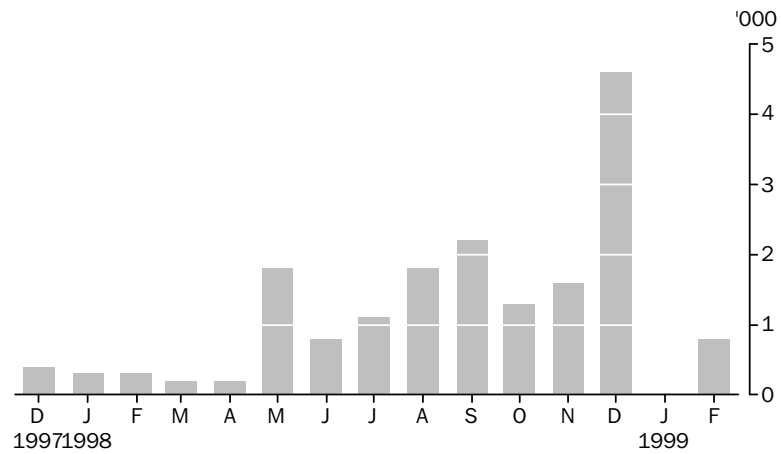
Industrial disputes

A total of 800 working days were lost through industrial disputes in February 1999. This was an increase from January 1999, where no working days were lost due to industrial disputation. South Australia accounted for 1.7% of total working days lost in February 1999.

The number of working days lost in South Australia in the 12 months to February 1999 was 16,300, almost triple the 6,500 days lost in the 12 months to February 1998.

Nationally, the number of working days lost for February 1999 increased by 39,300 days to 47,600 days. The annual estimate was 533,100 days lost, a fall of 7,800 days from the 12 months ended February 1998.

Industrial disputes, working days lost



Overtime

In original terms, the proportion of employees who worked overtime in February 1999 was 15.0%, compared with 14.2% in November 1998. There was a 7.2% decrease from the corresponding quarter of the previous year. The percentage of employees working overtime in South Australia in February 1999 was the same as the national rate of 15.0%.

In February 1998, employees who worked overtime in South Australia recorded an average of 5.7 overtime hours per week. This was higher than the 5.4 overtime hours recorded 12 months earlier and lower than the Australian average of 7.1 hours.

INCOMES

Average weekly earnings

The trend estimate of average weekly ordinary time earnings of full-time adult employees increased by 0.5% from November 1998 to February 1999. Similar increases were recorded in full-time ordinary earnings for males and females, up 0.6% and 0.5% respectively.

Between February 1999 and February 1998 the trend estimate of average weekly ordinary earnings of adult female employees increased 3.1%, compared with a larger increase of 5.5% for males.

For Australia, the trend estimate of full-time adult ordinary time earnings for males rose 2.9% over the 12 months to February 1999 and females increased by 4.2% over the same period.

Note: since it is an average of earnings across all employees, changes in average weekly earnings may occur through changes in employment as well as changes in pay levels.



**Wage cost index**

The Wage Cost Index measures quarterly changes in wage and salary costs for employee jobs. Hourly rates of pay are collected on both an ordinary time and total time basis, with or without bonuses. The first reference period is the quarter to December 1997. This new measure replaces the discontinued award rates of pay index.

In South Australia, the index of total hourly rates of pay (excluding bonuses) increased by 0.6% between September and December quarters 1998. Nationally, the corresponding increase was also 0.6%. The annual change for South Australia was 3.0% compared with 3.1% for Australia.

In South Australia, the index of ordinary time hourly rates of pay (excluding bonuses) rose by 0.7% in the quarter to December 1998. The Australian rate increased 0.6% for the same period. The annual rate increase of 3.1% was the same for both South Australia and Australia.

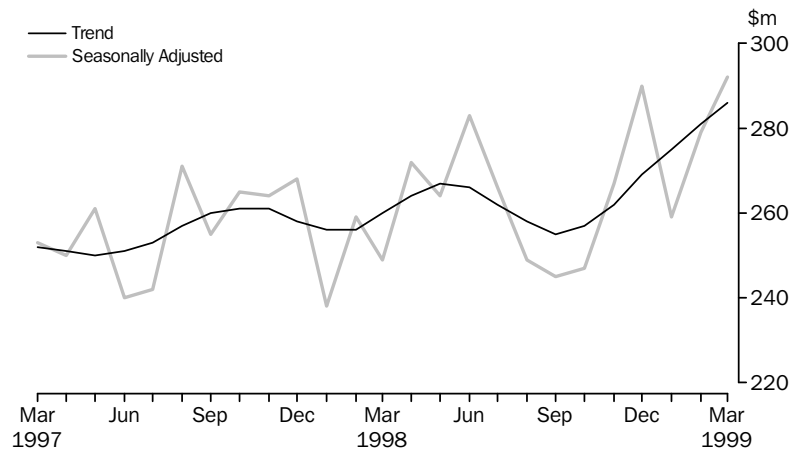
**FINANCIAL MARKETS****Housing finance**

In March 1999 the trend estimate for the value of new housing commitments (excluding alterations and additions) increased for the sixth consecutive month, up 1.8%. Seasonally adjusted, the value increased 4.7% to \$292.0m, 17.3% above March 1998. Nationally the trend estimate also increased for the sixth consecutive month, up 2.3%, with the seasonally adjusted value increasing 10.7%. In original terms, South Australia's proportion of the national total fell to 5.4%.

The number of new commitments in South Australia increased 23.2% to 3,719 in March 1999, the highest month since June 1994. The total value of new commitments (original figures including alterations and additions) increased 27.2% to \$360.0m, 20.8% above the previous March. The average value of commitments increased 2.2% from February 1999 to \$92,700 in March 1999. This is 9.7% higher than the average value of commitment in March 1998 (\$84,500). Nationally the average increased 3.0% to \$129,600, an increase of 13.3% over the year.

All the main categories increased significantly in value for the second consecutive month. Commitments for the purchase of established dwellings was \$239.0m in March 1999, an increase from both February 1999 and March 1998, up 29.9% and 37.4% respectively. Construction of dwellings increased 12.5% to \$45.0m, the highest month since August 1994 and 28.6% above March 1998. Nationally construction increased 32.9% to be 34.7% above the previous March. The purchase of newly erected dwellings rose 14.3% to \$8.0m and refinancing increased 20.9% to \$52.0m. Alterations and additions rose 50.0% to \$15.0m, 6.3% down over the 12 months to March 1999.

Secured housing finance commitments(a)



(a) Excludes alterations and additions. Includes refinancing.

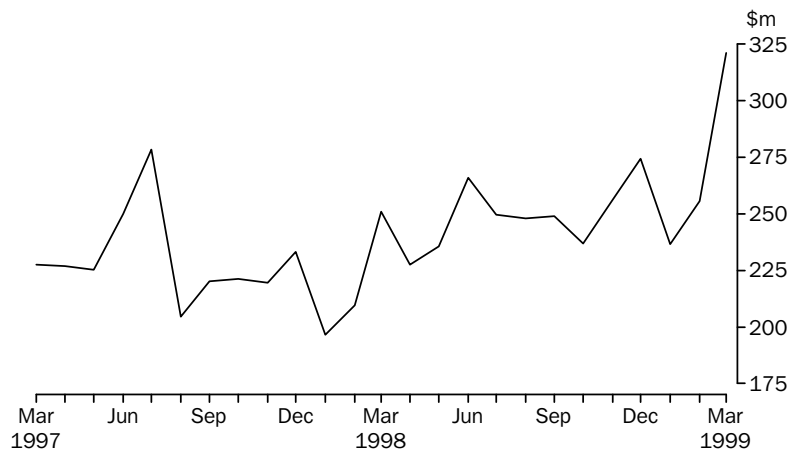
Personal finance

In March 1999 total personal finance commitments increased 25.8% to \$321.3m, 28.1% above March 1998. This represents a record high for personal finance in South Australia and follows six months with total commitments significantly above the corresponding month of the previous year. Nationally personal commitments also reached a record high (\$4394.8m) with an increase of 21.9% in original figures, representing an increase of 3.8% when seasonally adjusted.

Total revolving credit facilities increased 30.8% to \$174.1m, 45.9% higher than March 1998, with similar increases occurring nationally. Unsecured credit facilities increased to \$69.0m, 45.0% and 51.4% higher than February 1999 and March 1998 respectively. Secured credit facilities rose 22.9% to \$105.1m, 42.6% above March 1998.

Fixed loan commitments increased 20.4% to \$147.2m, 11.9% above March 1998. The main increase was for used motor cars and station wagons (the largest category), up 18.1% to \$42.3m, the highest month since June 1997. Boats, caravans and trailers almost tripled the February 1999 figure, rising to \$4.4m, to be double the previous March. Refinancing increased 18.7% to \$13.4m, 11.8% lower than March 1998. Commitments for individual residential blocks of land increased 41.3% to \$7.0m, 10.1% higher than the previous March. Only two categories decreased, with the main fall recorded in other motor vehicles down 19.5% to \$4.0m.

Personal loan commitments, all lenders



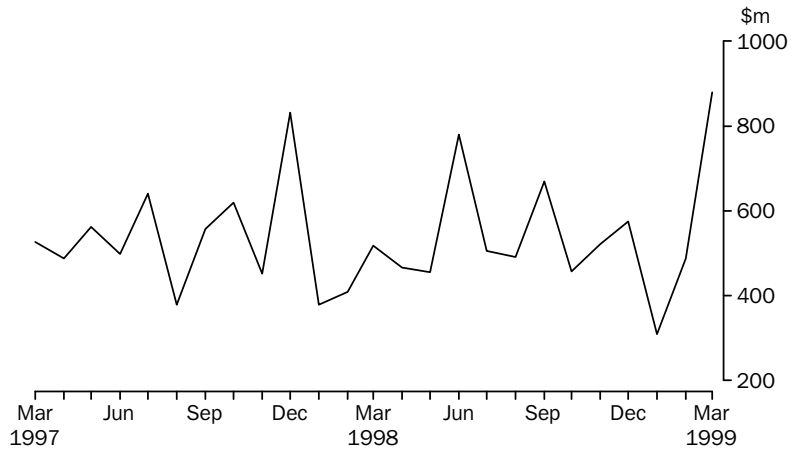
Commercial finance

Commercial finance increased 80.6% to \$880.1m in March 1999, the highest month since July 1991. In original terms the national total increased 41.7%, 15.0% up when seasonally adjusted. South Australia accounted for 5.1% of the national total.

Revolving credit facilities increased 96.1% to \$390.3m, more than double the March 1998 figure. The main increase was in finance, investment and insurance, up \$111.7m to \$124.9m, nearly triple the March 1998 figure. Health and community services increased \$33.4m to \$34.7m (the highest recorded for this category) and manufacturing increased \$31.1m to \$80.2m. The main falls were recorded in mining, down \$3.2m to \$0.2m and transport and storage, down \$3.1m to \$1.1m. Both categories also had significant falls in February 1999.

Fixed loan facilities increased 69.9% to \$489.8m, the highest month since July 1991 and 35.5% above the previous March. Wholesale trade increased \$76.9m to \$85.2m, more than double March 1998, and transport and storage increased \$46.6m to \$66.8m. The other major increases were mining (up \$26.9m), and property and business services (up \$22.7m). Agriculture, forestry, fishing and hunting rose \$23.0m to \$69.3m, the highest month recorded. The main fall was finance, investment and insurance, down \$32.2m to \$15.9m, following the highest month since June 1992.

Commercial finance commitments, all lenders



Lease finance

In March 1999 new finance lease commitments increased 27.5% to \$24.6m, marginally higher than the figure recorded for March 1998. The increase in South Australia was similar to the Australian total (22.9%), representing a marginal fall when seasonally adjusted. South Australia's proportion of Australian lease finance increased to 3.0%.

The main increase was construction and earthmoving equipment, up \$5.1m to \$5.3m, with March 1999 being the highest month since September 1996. New light trucks increased \$2.9m to \$3.8m, the highest recorded month. Both categories had significant falls in the previous month. New and used motor cars, station wagons and small passenger vehicles, not subject to depreciation, increased, with new up 14.9% to \$4.8m (marginally up on March 1998), and used by 11.8% to \$2.4m (28.0% up on the previous March).

Agricultural machinery and equipment decreased \$1.4m to \$1.4m, 38.6% lower than March 1998. This follows a significant increase in the previous month. Electronic data processing equipment dropped \$1.1m to \$0.9m, 60.1% up on March 1998 and follows a significant decrease in the previous month.

FORWARD OUTLOOK

Composite leading indicator for Australia

The Composite Leading Indicator (CLI) is a single time series produced by aggregating eight individual economic indicators, and has been developed by the ABS as an experimental series to supplement existing forms of economic analysis and modelling.

The CLI summarises the early signals contained in a selection of economic indicators and is designed to assist the detection of turning points between successive expansions and slow downs of economic activity as measured by constant price GDP(A). It does not attempt to forecast the level of economic activity.

Composite leading indicator for Australia

In the December quarter 1998, the experimental CLI fell 0.08%, following a fall of 0.27% in the September quarter 1998. This is the fifth consecutive fall and confirms the peak in the CLI in the September quarter 1997.

The quarterly data are released in more detail in the *Australian Economic Indicators* (Cat. no. 1350.0). The CLI was the topic of the Focus article in the September 1993 edition of *South Australian Economic Indicators* (Cat. no. 1307.4). A review of the performance of the CLI and its components was published in the July 1997 issue of Cat. no. 1350.0.

Business expectations

Surveys of business expectations have been available to decision makers for a number of years from several sources. These surveys provided *qualitative* indicators in the form of the net proportion of businesses expecting a rise or fall in future business conditions. Since the December quarter 1993, the ABS has been compiling a *quantitative* indicator of business expectations in the form of an expected weighted aggregate change in a range of economic variables. These data are available on a quarterly basis in *Australian Business Expectations* (Cat. no. 5250.0).

South Australia, Short-term outlook expected aggregate change

.....

	EXPECTED AGGREGATE CHANGE OVER THE PREVIOUS QUARTER.....				
	Jun qtr 1998	Sep qtr 1998	Dec qtr 1998	Mar qtr 1999	Jun qtr 1999
<i>Business performance indicators</i>	%	%	%	%	%
<b>Trading performance</b>					
Operating income	1.9	2.0	0.4	0.4	4.9
Selling prices	0.5	0.4	0.4	0.3	0.1
Profit	2.9	12.4	-16.0	6.9	37.5
<b>Investment</b>					
Capital expenditure	9.8	2.6	0.4	-4.9	3.8
Stocks	0.2	-2.4	-0.4	-1.3	-0.8
<b>Employment</b>					
Full time equivalent	-0.1	-1.2	1.0	-0.8	0.5

*Short term*—South Australian businesses expect an increase of 4.9% in operating income in the June quarter 1999 compared with the March quarter 1999 whilst the Australian rate was 1.8%. The investment component for South Australia was expected to increase 3.8% for capital expenditure compared with a 2.9% increase for Australia whilst full-time employment levels were expected to rise 0.5% for South Australia and 0.3% for Australia.

South Australia, Medium-term outlook expected aggregate change

EXPECTED AGGREGATE CHANGE OVER THE  
SAME QUARTER OF THE PREVIOUS YEAR.....

	Mar qtr 1999	Jun qtr 1999	Sep qtr 1999	Dec qtr 1999	Mar qtr 2000
<i>Business performance indicators</i>	%	%	%	%	%
<b>Trading performance</b>					
Operating income	2.7	3.4	2.8	2.7	3.8
Selling prices	0.7	0.8	1.0	0.8	0.3
Profit	22.7	20.9	-0.6	10.2	27.4
<b>Investment</b>					
Capital expenditure	-2.0	8.6	-6.0	22.2	0.6
Stocks	0.2	0.3	1.8	-0.2	0.3
<b>Employment</b>					
Full time equivalent	-1.3	-0.5	0.6	0.3	0.4

*Medium term*—Businesses in South Australia expect operating income in the March quarter 2000 to be 3.8% above March quarter 1999. Capital expenditure is expected to increase by 0.6% whilst employment indicators are showing an increase of 0.4%. The Australian data shows a 0.6% increase in capital expenditure and a 0.2% fall in employment levels.

# LIST OF TABLES

Page

## TABLES

1	Statistical summary	24
	Time series	
2	State accounts—current prices	26
3	State accounts—chain volume measures 1996–97	27
4	Merchandise exports by selected commodity group	28
5	Merchandise exports by selected countries	29
6	Merchandise exports by industry of origin	30
7	Merchandise imports by selected commodity group	31
8	Turnover of retail establishments by industry	32
9	New motor vehicle registrations by type of vehicle	33
10	Actual private new capital expenditure by selected industry and type of asset	34
11	Tourist accommodation	35
12	Building approvals	36
13	Building commencements	37
14	Value of building work done during period	38
15	Production, livestock products and selected commodities	39
16	Consumer price index, by group—Adelaide	40
17	Average retail prices of selected consumer items—Adelaide	41
18	Estimated resident population and components of population change	42
19	Civilian labour force status	43
20	Civilian labour force, unemployment and participation rates	44
21	Average weekly earnings of employees	45
22	Finance commitments	46

# 1 STATISTICAL SUMMARY

Indicator	SOUTH AUSTRALIA.....					AUSTRALIA.....				
	Unit	Period	Number	% change from.....		Number	% change from.....		SA as a % of Aust.	Source index
				Previous period	Same period previous year		Previous period	Same period previous year		
<b>State accounts</b>										
Domestic final demand										
Current prices trend	\$m	Dec qtr 98	10 336	0.6	3.5	149 663	1.5	6.4	6.9	(1)
Chain volume measures trend	\$m	Dec qtr 98	10 038	0.2	1.5	145 246	1.1	4.5	6.9	(1)
Private final consumption expenditure										
Current prices trend	\$m	Dec qtr 98	6 385	1.3	6.0	87 464	1.6	5.9	7.3	(1)
Chain volume measures trend	\$m	Dec qtr 98	6 223	0.9	4.3	84 940	1.3	4.2	7.3	(1)
Private gross fixed capital formation										
Current prices trend	\$m	Dec qtr 98	1 524	-4.7	-5.2	27 309	-1.6	1.7	5.6	(1)
Chain volume measures trend	\$m	Dec qtr 98	1 471	-5.2	-7.6	26 867	-1.6	0.8	5.5	(1)
Compensation of employees										
Current prices trend	\$m	Dec qtr 98	4 728	0.0	0.0	71 747	1.8	7.1	6.6	(1)
<b>International accounts</b>										
Exports	\$m	Mar 99	546.3	34.3	15.1	6 921.8	18.8	-0.2	7.9	(2)
Imports	\$m	Mar 99	349.9	15.9	-2.0	8 709.2	22.4	6.4	4.0	(2)
<b>Consumption and investment</b>										
Retail turnover										
Current prices original	\$m	Mar 99	885.3	13.5	9.2	11 936.0	11.8	10.8	7.4	(3)
Current prices trend	\$m	Mar 99	904.9	0.6	5.6	12 236.6	1.1	8.3	7.4	(3)
1996-97 chain volume measures	\$m	Dec qtr 98	2 898.2	16.7	5.4	38 213.4	15.8	2.7	7.6	(3)
New motor vehicle registrations										
Original	no.	Mar 99	4 809	22.6	10.6	76 232	26.4	11.6	6.3	(4)
Trend	no.	Mar 99	4 189	0.8	-3.4	66 773	0.5	2.4	6.3	(4)
Private new capital expenditure										
Current prices original	\$m	Dec qtr 98	665	10.7	-30.2	11 998	3.2	-6.3	5.5	(5)
Current prices trend	\$m	Dec qtr 98	581	-13.7	-29.3	11 492	-2.3	-0.1	5.1	(5)
Private new capital expenditure	\$m	1997-98	3 193	..	23.8	46 220	..	5.4	6.9	(5)
Takings, licensed hotels, motels, guest houses and apartments with facilities	\$m	Dec qtr 98	49.8	17.1	9.8	1 043.2	4.5	5.7	4.8	(6)
<b>Production</b>										
Dwelling unit approvals										
Original	no.	Mar 99	750	23.6	1.6	12 999	8.1	-6.2	5.8	(7)
Trend	no.	Mar 99	664	1.6	3.6	12 747	-0.5	-6.0	5.2	(7)
Dwelling units commenced	no.	Dec qtr 98	1 932	-2.4	1.4	36 174	-8.9	-6.5	5.3	(8a)
Value of non-residential building approvals	\$m	Mar 99	56.1	-52.6	4.3	1 063.7	-11.1	10.8	5.3	(7)
Value of total building activity										
Commenced	\$m	Dec qtr 98	390.6	11.4	0.7	8 054.4	-4.9	-6.1	4.8	(8)
Work done	\$m	Dec qtr 98	383.0	-0.2	-2.0	9 167.2	5.6	10.6	4.2	(8)
Work yet to be done	\$m	Dec qtr 98	334.9	7.6	0.0	12 934.9	-6.2	5.4	2.6	(8)
Value of engineering construction work done	\$m	Dec qtr 98	245.9	0.6	-17.8	4,650.0	7.1	11.7	5.3	(9)
Manufacturing production										
Red meat	tonnes	Mar qtr 99	44 168	-9.8	-24.7	725 901	-3.6	-1.0	6.1	(11)
Mineral exploration expenditure (other than for petroleum)	\$m	Dec qtr 98	8.9	-29.4	-21.9	239.6	1.6	-15.0	3.7	(12)



Indicator	Unit	Period	SOUTH AUSTRALIA.....			AUSTRALIA.....			SA as a % of Aust.	Source index
			Number	% change from.....		Number	% change from .....			
				Previous period	Same period previous year		Previous period	Same period previous year		
<b>Prices</b>										
CPI – All groups	1989–90=100	Mar qtr 99	122.7	-0.7	0.8	121.8	-0.1	1.2	..	(13)
Price index of materials used in house building	1989–90=100	Mar qtr 99	125.1	-0.1	1.1	119.5	-0.2	0.7	..	(14)
Price index of materials used in building other than houses	1989–90=100	Mar qtr 99	115.6	0.0	0.5	115.2	0.0	1.0	..	(15)
Price index of established houses	1989–90=100	Dec qtr 98	113.0	-0.1	2.0	129.0	1.7	6.4	..	(16)
Price index of project homes	1989–90=100	Dec qtr 98	116.2	1.8	3.3	112.3	0.8	2.1	..	(16)
<b>Labour force and demography</b>										
Population (resident at end qtr)	'000	Sep qtr 98	1 488.8	0.1	0.5	18 813.0	0.3	1.3	7.9	(17)
Short-term overseas visitor arrivals	no.	Feb 99	10 400	20.0	8.8	398 600	13.6	12.7	2.6	(21)
Short-term resident departures	no.	Feb 99	9 000	0.1	-1.2	198 500	-14.7	0.8	4.5	(21)
<b>Labour force</b>										
Original	'000	Apr 99	714.3	-1.6	0.4	9 418.8	-0.2	1.2	7.6	(18)
Trend	'000	Apr 99	719.7	-0.2	1.4	9 408.3	0.1	1.1	7.6	(18)
<b>Employed persons</b>										
Original	'000	Apr 99	655.2	-0.6	1.7	8 713.6	0.2	1.6	7.5	(18)
Trend	'000	Apr 99	657.3	0.0	2.9	8 711.2	0.1	1.9	7.5	(18)
<b>Participation rate</b>										
Original(a)	%	Apr 99	59.7	-1.0	-0.2	63.0	-0.2	-0.2	..	(18)
Trend(a)	%	Apr 99	60.2	-0.1	0.4	63.0	0.0	-0.2	..	(18)
<b>Unemployment rate</b>										
Original(a)	%	Apr 99	8.3	-0.8	-1.2	7.5	-0.3	-0.4	..	(18)
Trend(a)	%	Apr 99	8.7	-0.1	-1.3	7.4	0.0	-0.7	..	(18)
Job vacancies	'000	Feb 99	4.2	-12.5	27.3	66.6	-14.0	-11.8	6.3	(19)
Average weekly overtime per employee working overtime	hours	Feb 99	5.74	-0.7	6.8	7.10	3.9	5.7	..	(19)
	'000 working days lost	Feb 99	0.8	..	166.7	47.6	473.5	20.8	1.7	(20)
<b>Incomes</b>										
<b>Average weekly earnings (full-time adults; ordinary time)</b>										
Original	\$	Feb 99	699.6	-0.4	2.3	744.8	0.5	3.1	..	(22)
Trend	\$	Feb 99	702.9	0.5	4.4	745.0	0.6	3.4	..	(22)
<b>Wage cost index (Total hourly rate excluding bonuses)</b>										
	Sep 1997=100	Dec qtr 98	103.8	0.6	3.0	103.9	0.6	3.1	..	(23)
<b>Financial markets</b>										
<b>Secured housing finance</b>										
Personal	\$m	Mar 99	360.0	27.2	20.8	6 701.0	30.5	33.1	5.4	(24)
<b>Finance commitments</b>										
Personal	\$m	Mar 99	321.3	25.8	28.1	4 394.8	21.9	20.9	7.3	(25)
Commercial	\$m	Mar 99	880.1	80.6	69.8	17 398.0	41.7	36.3	5.1	(25)
Lease	\$m	Mar 99	24.6	27.5	1.6	830.3	22.9	-0.7	3.0	(25)
<b>Interest rates</b>										
Banks new housing loans(a)	%	Apr 99	..	..	..	6.50	0.00	-0.20	..	(26)
<b>Banks business loans(a)</b>										
Small, medium business(b)	%	Apr 99	..	..	..	7.45	-0.10	-1.30	..	(26)
Large business	%	Apr 99	..	..	..	7.95	0.00	-0.25	..	(26)

(a) Change is shown in terms of percentage points.

(b) Rate for business loans over \$50,000

Period	EXPENDITURE.....				GROSS FIXED CAPITAL FORMATION.....		
	Households	General Government	Private	Public	State final demand	Gross State product (I)	Compensation of employees
ANNUAL (\$m)							
1992-93	19 538	6 561	4 399	1 523	32 021	30 708	15 131
1993-94	20 400	7 224	4 459	1 356	33 438	32 255	16 145
1994-95	21 475	7 317	5 541	1 421	35 753	33 383	16 587
1995-96	22 617	7 433	5 176	1 185	36 411	35 928	17 518
1996-97	22 920	7 477	5 772	1 274	37 444	36 434	18 140
1997-98	24 294	7 882	6 675	1 286	40 138	38 966	18 902
PERCENTAGE CHANGE FROM PREVIOUS YEAR							
1992-93	2.1	3.3	3.2	-6.7	2.1	4.4	3.2
1993-94	4.4	10.1	1.4	-11.0	4.4	5.0	6.7
1994-95	5.3	1.3	24.3	4.8	6.9	3.5	2.7
1995-96	5.3	1.6	-6.6	-16.6	1.8	7.6	5.6
1996-97	1.3	0.6	11.5	7.5	2.8	1.4	3.6
1997-98	6.0	5.4	15.6	0.9	7.2	6.9	4.2
QUARTERLY, ORIGINAL (\$m)							
<b>1997-98</b>							
September	5 908	1 847	1 524	308	9 586	n.a.	4 710
December	6 346	1 940	1 869	375	10 530	n.a.	4 906
March	5 892	1 873	1 640	207	9 612	n.a.	4 587
June	6 148	2 117	1 646	400	10 311	n.a.	4 699
<b>1998-99</b>							
September	6 287	2 028	1 574	276	10 166	n.a.	4 761
December	6 734	2 088	1 670	346	10 838	n.a.	4 842
QUARTERLY, TREND (\$m)							
<b>1997-98</b>							
September	5 916	1 905	1 609	349	9 779	n.a.	4 691
December	6 026	1 937	1 687	332	9 982	n.a.	4 730
March	6 128	1 967	1 725	302	10 122	n.a.	4 738
June	6 220	2 008	1 689	294	10 211	n.a.	4 732
<b>1998-99</b>							
September	6 306	2 047	1 599	326	10 279	n.a.	4 729
December	6 385	2 077	1 524	357	10 336	n.a.	4 728
PERCENTAGE CHANGE FROM PREVIOUS QUARTER, TREND							
<b>1997-98</b>							
September	1.8	2.2	5.9	2.9	2.6	..	1.4
December	1.9	1.7	4.8	-4.9	2.1	..	0.8
March	1.7	1.5	2.3	-9.0	1.4	..	0.2
June	1.5	2.1	-2.1	-2.6	0.9	..	-0.1
<b>1998-99</b>							
September	1.4	1.9	-5.3	10.9	0.7	..	-0.1
December	1.3	1.5	-4.7	9.5	0.6	..	0.0

# 3

## STATE ACCOUNTS AT CHAIN VOLUME MEASURES(a)

Period	FINAL CONSUMPTION EXPENDITURE.....		GROSS FIXED CAPITAL FORMATION.....			State final demand	Gross State product(I)
	Households	General Government	Private	Public			
ANNUAL (\$m)							
1992-93	20 604	7 014	4 309	1 526	33 433	32 617	
1993-94	21 110	7 390	4 287	1 343	34 093	33 488	
1994-95	22 112	7 508	5 277	1 406	36 310	33 758	
1995-96	22 905	7 514	4 967	1 162	36 518	35 891	
1996-97	22 920	7 477	5 772	1 273	37 444	36 434	
1997-98	24 003	7 788	6 652	1 283	39 726	38 573	
PERCENTAGE CHANGE FROM PREVIOUS YEAR							
1992-93	-1.0	1.5	-0.2	-3.5	-0.5	2.3	
1993-94	2.5	5.4	-0.5	-12.0	2.0	2.7	
1994-95	4.7	1.6	23.1	4.7	6.5	0.8	
1995-96	3.6	0.1	-5.9	-17.4	0.6	6.3	
1996-97	0.1	-0.5	16.2	9.6	2.5	1.5	
1997-98	4.7	4.2	15.2	0.8	6.1	5.9	
QUARTERLY, ORIGINAL (\$m)							
<b>1997-98</b>							
September	5 862	1 847	1 539	296	9 545	n.a.	
December	6 289	1 908	1 862	378	10 437	n.a.	
March	5 817	1 849	1 611	208	9 484	n.a.	
June	6 035	2 080	1 591	401	10 106	n.a.	
<b>1998-99</b>							
September	6 143	1 955	1 531	269	9 897	n.a.	
December	6 567	2 024	1 626	322	10 540	n.a.	
QUARTERLY, TREND (\$m)							
<b>1997-98</b>							
September	5 879	1 896	1 618	345	9 739	n.a.	
December	5 969	1 917	1 678	330	9 894	n.a.	
March	6 042	1 934	1 693	302	9 971	n.a.	
June	6 107	1 963	1 645	288	10 002	n.a.	
<b>1998-99</b>							
September	6 169	1 989	1 551	313	10 020	n.a.	
December	6 223	2 001	1 471	337	10 038	n.a.	
PERCENTAGE CHANGE FROM PREVIOUS QUARTER, TREND							
<b>1997-98</b>							
September	1.6	1.8	5.5	2.7	2.3	..	
December	1.5	1.1	3.7	-4.3	1.6	..	
March	1.2	0.9	0.9	-8.5	0.8	..	
June	1.1	1.5	-2.8	-4.6	0.3	..	
<b>1998-99</b>							
September	1.0	1.3	-5.7	8.7	0.2	..	
December	0.9	0.6	-5.2	7.7	0.2	..	

(a) Reference year for chain volume measures is 1996-97.

## 4

## MERCHANDISE EXPORTS, By Selected Commodity Group(a)

<i>Period</i>	<i>Meat and meat preparations</i>	<i>Cereals and cereal preparations</i>	<i>Wine</i>	<i>Wool and sheepskins</i>	<i>Machinery</i>	<i>Metals and metal manu- factures</i>	<i>Fish and crustaceans</i>	<i>Road vehicles, parts and accessories</i>	<i>Petroleum and petroleum products</i>	<i>Total</i>
	\$'000	\$'000	\$'000	\$'000	\$'000	\$'000	\$'000	\$'000	\$'000	\$'000
ANNUAL										
1992-93	282 181	573 375	192 233	318 989	211 426	490 594	154 608	338 359	372 445	3 760 602
1993-94	324 847	436 563	238 457	290 980	223 961	462 421	186 889	351 269	276 472	3 890 627
1994-95	307 785	261 052	250 527	301 645	285 309	571 094	191 386	332 321	285 310	3 829 336
1995-96	244 508	713 092	318 473	240 148	340 205	610 899	196 629	249 237	220 915	4 498 532
1996-97	182 478	745 227	397 949	260 974	378 923	542 204	191 093	655 881	286 458	5 009 345
1997-98	218 252	691 129	564 083	287 824	401 749	574 407	236 353	479 420	237 824	4 978 942
MONTHLY										
<b>1997-98</b>										
October	17 450	20 950	62 258	23 438	26 461	37 876	23 617	39 356	10 935	360 815
November	21 311	41 278	33 344	29 856	41 143	61 843	18 039	83 677	18 110	454 693
December	22 742	92 765	36 065	35 568	38 306	40 932	13 637	72 253	33 679	482 272
January	15 469	107 580	25 835	20 260	21 783	56 613	24 571	15 137	12 427	368 261
February	21 189	81 091	43 674	17 710	27 617	41 123	18 253	19 097	18 197	363 980
March	23 933	76 734	55 440	26 154	37 500	51 720	22 850	37 642	19 792	474 786
April	20 323	71 491	50 539	16 054	30 937	48 037	21 581	24 260	12 089	410 224
May	19 757	36 499	58 188	28 786	41 200	44 539	18 447	30 792	18 406	440 954
June	16 188	67 210	52 876	17 049	25 411	49 813	21 084	24 268	13 434	412 631
<b>1998-99</b>										
July	11 886	41 106	48 323	17 802	37 239	36 741	23 828	44 144	8 909	388 182
August	12 036	57 675	54 365	14 136	30 391	51 467	30 657	43 037	20 669	455 318
September	17 730	46 101	70 084	21 737	30 230	39 773	28 826	82 634	12 086	473 925
October	20 292	37 462	72 262	23 109	28 835	39 298	16 321	45 615	19 012	418 808
November	23 420	12 520	40 014	23 410	33 813	44 046	15 738	76 332	8 740	398 256
December	21 957	84 612	48 360	21 800	39 439	46 033	18 732	72 038	22 904	515 392
January	12 469	93 036	39 131	10 921	20 705	32 232	20 641	17 334	3 544	375 739
February	19 084	43 302	50 982	16 926	29 558	47 625	20 889	23 346	9 733	406 813
March	16 948	73 005	65 273	15 929	28 927	57 942	18 287	101 431	11 714	546 286

(a) Final stage of production in South Australia.

## 5

## MERCHANDISE EXPORTS, By Selected Countries(a)

Period	EUROPEAN UNION.....					EAST ASIA.....				
	<i>United States of America</i>	<i>Middle East</i>	<i>United Kingdom</i>	<i>Total European Union</i>	<i>New Zealand</i>	<i>Japan</i>	<i>China</i>	<i>Hong Kong</i>	<i>ASEAN</i>	<i>Total East Asia</i>
	\$'000	\$'000	\$'000	\$'000	\$'000	\$'000	\$'000	\$'000	\$'000	\$'000
ANNUAL										
1992-93	352 764	314 049	237 520	594 701	288 421	649 684	208 135	171 803	487 910	1 820 065
1993-94	393 676	280 518	263 100	571 080	312 148	625 528	220 217	165 230	534 419	1 899 307
1994-95	329 878	184 342	246 118	553 052	376 262	682 937	177 875	193 014	553 794	2 004 014
1995-96	279 555	525 348	287 727	691 996	376 628	672 885	293 360	202 307	574 165	2 057 945
1996-97	707 871	563 409	304 645	641 308	382 103	611 870	244 917	234 547	615 943	2 030 436
1997-98	632 203	389 766	424 251	849 932	354 723	612 218	331 489	239 652	491 564	2 023 119
MONTHLY										
<b>1997-98</b>										
October	26 279	10 465	55 190	89 952	41 159	52 538	27 453	10 146	41 844	149 686
November	92 792	20 278	26 755	56 937	25 983	65 589	33 375	28 165	65 284	224 741
December	80 392	41 986	27 798	59 759	17 406	54 762	33 218	25 272	51 166	196 158
January	19 822	45 843	16 660	37 176	23 869	39 153	24 539	27 258	34 196	155 155
February	33 828	32 808	28 219	69 542	29 889	36 608	36 830	23 072	20 162	137 566
March	63 876	57 910	33 353	78 019	37 792	48 425	37 418	21 220	39 874	180 732
April	38 373	52 361	39 893	78 611	35 943	45 057	12 599	14 654	21 024	127 025
May	43 378	27 970	46 314	99 584	32 101	51 107	28 785	20 116	25 046	160 363
June	52 213	30 122	35 019	68 106	31 172	55 368	22 009	14 993	26 900	154 563
<b>1998-99</b>										
July	49 983	36 832	37 794	64 806	36 659	45 130	11 003	19 773	24 087	123 097
August	34 075	33 052	45 878	79 204	33 707	73 436	23 384	16 548	44 407	179 619
September	87 466	53 605	47 456	80 289	32 194	67 693	26 358	16 476	23 423	154 849
October	39 435	43 420	50 012	82 334	31 677	39 683	33 269	20 642	28 200	142 311
November	85 490	33 540	23 357	41 235	29 456	30 424	39 460	19 539	39 085	158 868
December	72 375	108 904	31 536	80 069	31 828	50 270	17 915	25 466	37 422	169 094
January	25 716	91 222	27 983	60 767	20 901	25 352	31 133	16 119	19 010	112 513
February	33 082	38 879	32 555	75 535	29 496	51 496	19 591	21 196	35 519	154 202
March	82 965	86 738	47 505	91 211	33 587	61 836	29 136	17 535	39 552	179 496

(a) Final stage of production in South Australia.

## 6

## MERCHANDISE EXPORTS, By Industry of Origin(a)

## MANUFACTURING.....

Period	Agriculture, forestry and fishing	Mining	Food, beverages and tobacco	Petroleum, coal, chemical associated product	Metal product	Machinery and equipment	Other manu- facturing	Other industries/ confidential	Total
	\$'000	\$'000	\$'000	\$'000	\$'000	\$'000	\$'000	\$'000	\$'000
ANNUAL									
1992-93	857 974	294 586	794 681	193 151	508 459	643 443	178 071	290 237	3 760 602
1993-94	701 992	245 256	919 884	177 865	471 347	669 068	207 339	497 876	3 890 627
1994-95	592 129	268 537	886 337	186 661	584 838	711 529	243 314	355 991	3 829 336
1995-96	1 014 521	180 241	978 332	218 353	639 267	674 131	226 496	567 191	4 498 532
1996-97	1 067 084	202 162	981 918	290 361	569 679	1 140 136	226 780	531 226	5 009 345
1997-98	1 110 049	137 851	1 205 081	292 175	615 344	994 622	262 798	361 022	4 978 942
MONTHLY									
<b>1997-98</b>									
October	54 209	1 722	119 482	18 055	39 145	73 873	19 014	35 314	360 815
November	78 371	16 715	89 418	25 488	67 645	134 105	22 038	20 913	454 693
December	127 161	28 936	88 087	26 808	45 353	121 927	21 840	22 160	482 272
January	130 921	6 767	77 125	17 938	58 347	43 235	18 390	15 538	368 261
February	112 796	805	91 561	25 843	42 638	56 040	19 488	14 809	363 980
March	124 635	13 279	116 808	23 588	55 768	86 292	29 905	24 510	474 786
April	94 690	896	105 811	22 179	51 716	64 150	20 316	50 466	410 224
May	70 552	3 524	118 987	30 653	49 662	84 612	23 947	59 017	440 954
June	98 738	10 307	105 051	24 871	52 139	59 884	17 105	44 537	412 631
<b>1998-99</b>									
July	80 391	916	95 544	16 951	42 744	92 690	17 418	41 528	388 182
August	88 413	8 725	98 298	34 630	53 203	90 632	19 941	61 475	455 318
September	77 554	1 066	112 615	26 209	40 577	122 096	21 894	71 914	473 925
October	70 620	9 066	121 024	27 700	41 345	85 546	21 252	42 255	418 808
November	45 312	14 644	86 095	19 311	48 123	123 267	20 329	41 175	398 256
December	117 056	7 760	101 536	32 699	51 949	121 086	22 642	60 664	515 392
January	118 567	1 112	77 427	13 355	33 004	46 517	18 124	67 634	375 739
February	99 556	9 484	100 248	19 946	49 989	63 422	20 616	43 553	406 813
March	120 662	511	111 080	23 098	62 743	144 495	29 048	54 649	546 286

(a) Final stage of production in South Australia.

## 7

## MERCHANDISE IMPORTS, By Selected Commodity Group(a)

<i>Period</i>	<i>Food, beverages and tobacco</i>	<i>Petroleum and petroleum products</i>	<i>Chemicals</i>	<i>Textiles</i>	<i>Metals and metal manufactures</i>	<i>Machinery</i>	<i>Road, vehicles, parts and accessories</i>	<i>Other manufactured goods</i>	<i>Total</i>
	\$'000	\$'000	\$'000	\$'000	\$'000	\$'000	\$'000	\$'000	\$'000
ANNUAL									
1992-93	91 756	570 334	186 001	57 434	255 924	609 212	661 714	521 723	3 068 122
1993-94	99 177	404 626	200 225	60 172	160 937	595 238	663 617	484 590	2 803 446
1994-95	115 930	330 430	220 536	64 524	214 432	695 038	749 658	563 368	3 099 510
1995-96	118 237	346 397	254 102	76 847	213 487	675 869	546 445	728 096	3 114 309
1996-97	136 695	505 633	225 187	79 708	223 259	868 346	538 690	695 238	3 413 043
1997-98	148 771	445 218	274 741	93 815	280 562	1 061 260	772 203	739 266	3 940 198
MONTHLY									
<b>1997-98</b>									
October	15 074	2 052	12 983	8 211	22 588	76 605	67 992	56 732	271 659
November	14 009	67 061	16 244	7 528	21 290	75 564	55 373	51 324	321 543
December	13 857	32 306	22 823	6 607	21 520	115 623	58 610	58 122	342 164
January	13 497	29 721	39 180	8 063	24 670	96 949	54 033	55 492	332 475
February	10 608	39 221	26 084	8 195	27 664	69 791	53 601	70 676	314 306
March	11 294	41 325	31 280	8 678	26 177	86 622	70 446	70 667	357 051
April	10 012	22 090	38 574	9 335	21 137	113 439	61 182	63 078	350 581
May	11 224	38 780	27 490	8 945	21 394	74 468	56 026	60 750	310 724
June	13 086	15 049	18 431	8 041	25 140	89 988	70 652	62 513	313 741
<b>1998-99</b>									
July	14 293	23 350	13 006	9 514	26 572	95 455	71 756	64 569	329 710
August	15 000	18 697	14 930	8 217	24 495	83 417	67 746	66 505	308 231
September	14 111	12 616	22 609	8 647	25 446	73 876	63 421	63 209	292 070
October	15 828	11 640	18 150	9 116	23 219	82 586	78 648	59 588	310 764
November	15 327	36 487	23 601	7 876	21 420	75 556	70 387	71 941	334 554
December	13 026	16 970	18 804	6 467	19 204	75 014	64 423	59 276	283 661
January	12 745	17 413	35 263	6 819	21 562	79 681	58 847	59 242	306 696
February	11 564	31 555	29 787	7 365	19 695	64 604	68 736	56 330	301 946
March	16 163	25 737	32 000	7 807	23 341	71 920	77 963	79 725	349 935

(a) Goods released from Customs control in South Australia.

## 8

## TURNOVER OF RETAIL ESTABLISHMENTS, By Industry

Period	Food retailing	Department stores	Clothing and soft good retailing	Household good retailing	Recreational good retailing	Other retailing	Hospitality and services	Total
ANNUAL (\$m)								
1993-94	3 253.3	1 107.8	479.0	917.8	378.1	684.0	1 338.8	8 158.8
1994-95	3 477.3	1 128.8	538.0	959.6	383.8	793.5	1 654.4	8 935.4
1995-96	3 786.4	1 138.6	546.6	1 025.8	431.2	902.7	1 762.1	9 593.4
1996-97	4 064.9	1 120.9	467.1	936.9	424.8	792.8	1 648.0	9 455.7
1997-98	4 454.4	1 073.7	541.0	1 084.2	413.3	928.2	1 502.7	10 051.4
MONTHLY, ORIGINAL (\$m)								
<b>1997-98</b>								
January	396.1	93.8	45.3	94.2	33.4	77.0	116.1	856.0
February	344.9	76.0	33.0	81.9	29.1	69.3	107.4	741.5
March	373.6	78.4	42.9	85.2	34.2	75.8	120.4	810.5
April	385.7	91.6	49.7	81.6	31.8	80.9	127.3	848.6
May	381.2	86.6	50.0	89.3	31.7	86.1	131.0	855.8
June	365.4	80.0	46.6	89.8	32.5	76.8	124.3	815.5
<b>1998-99</b>								
July	390.1	96.3	48.9	84.2	34.6	77.9	133.9	865.8
August	380.6	79.8	43.2	82.7	32.0	76.6	130.8	825.5
September	387.9	82.6	45.1	81.0	35.4	80.8	136.9	849.8
October	421.8	89.7	50.5	91.8	36.0	84.6	150.5	925.0
November	399.1	101.1	48.1	91.5	35.2	86.7	135.8	897.4
December	473.0	170.9	64.8	116.3	51.8	118.3	162.4	1 157.4
January	420.2	78.0	43.0	94.3	30.0	79.4	134.6	879.5
February	376.7	65.5	36.3	77.2	28.1	75.7	120.5	780.0
March	415.5	83.4	49.6	83.0	31.9	85.7	136.1	885.3
MONTHLY, TREND (\$m)								
<b>1997-98</b>								
January	373.5	93.5	44.4	93.2	33.4	80.7	117.9	840.7
February	378.4	93.8	45.0	92.9	33.6	81.9	120.0	849.2
March	382.4	93.7	45.8	92.1	34.1	82.5	123.7	856.7
April	385.3	93.5	46.5	91.0	34.7	82.5	128.0	862.6
May	387.2	92.9	47.3	89.7	35.3	82.2	132.7	867.2
June	389.1	92.4	47.9	88.6	35.9	81.5	136.8	871.7
<b>1998-99</b>								
July	391.2	92.0	48.4	87.5	36.2	81.0	139.5	875.4
August	393.7	91.9	48.7	86.7	36.2	81.0	140.4	878.6
September	396.2	91.8	48.5	86.6	35.9	81.6	139.3	879.8
October	399.3	91.4	48.0	87.3	35.1	82.9	137.0	881.0
November	403.0	91.2	47.6	88.5	34.2	84.4	134.7	883.4
December	407.0	91.3	47.3	89.5	33.3	85.7	133.2	887.3
January	411.1	91.8	47.5	89.9	32.7	86.8	132.8	892.6
February	415.0	92.4	48.0	89.9	32.2	87.7	133.6	899.2
March	418.1	92.8	48.6	89.4	31.9	88.5	134.5	904.9
PERCENTAGE CHANGE FROM PREVIOUS MONTH, TREND								
<b>1997-98</b>								
January	1.4	0.3	0.7	0.2	0.0	2.5	0.2	1.0
February	1.3	0.3	1.4	-0.3	0.6	1.5	1.8	1.0
March	1.1	-0.1	1.8	-0.9	1.5	0.7	3.1	0.9
April	0.8	-0.2	1.5	-1.2	1.8	0.0	3.5	0.7
May	0.5	-0.6	1.7	-1.4	1.7	-0.4	3.7	0.5
June	0.5	-0.5	1.3	-1.2	1.7	-0.9	3.1	0.5
<b>1998-99</b>								
July	0.5	-0.4	1.0	-1.2	0.8	-0.6	2.0	0.4
August	0.6	-0.1	0.6	-0.9	0.0	0.0	0.6	0.4
September	0.6	-0.1	-0.4	-0.1	-0.8	0.7	-0.8	0.1
October	0.8	-0.4	-1.0	0.8	-2.2	1.6	-1.7	0.1
November	0.9	-0.2	-0.8	1.4	-2.6	1.8	-1.7	0.3
December	1.0	0.1	-0.6	1.1	-2.6	1.5	-1.1	0.4
January	1.0	0.5	0.4	0.4	-1.8	1.3	-0.3	0.6
February	0.9	0.7	1.1	0.0	-1.5	1.0	0.6	0.7
March	0.7	0.4	1.3	-0.6	-0.9	0.9	0.7	0.6



Period	ORIGINAL.....			SEASONALLY ADJUSTED.....			TREND ESTIMATE.....		
	Passenger vehicles	Other vehicles	Total	Passenger vehicles	Other vehicles	Total	Passenger vehicles	Other vehicles	Total
ANNUAL									
1991-92	32 351	5 333	37 684	..	..	..	..	..	..
1992-93	32 894	5 577	38 471	..	..	..	..	..	..
1993-94	32 806	5 781	38 587	..	..	..	..	..	..
1994-95	35 830	6 736	42 566	..	..	..	..	..	..
1995-96	36 067	6 828	42 895	..	..	..	..	..	..
1996-97	36 146	6 970	43 116	..	..	..	..	..	..
1997-98	43 407	7 453	50 860	..	..	..	..	..	..
PERCENTAGE CHANGE FROM PREVIOUS YEAR									
1991-92	-6.9	-19.4	-8.9	..	..	..	..	..	..
1992-93	1.7	4.6	2.1	..	..	..	..	..	..
1993-94	-0.3	3.7	0.3	..	..	..	..	..	..
1994-95	9.2	16.5	10.3	..	..	..	..	..	..
1995-96	0.7	1.4	0.8	..	..	..	..	..	..
1996-97	0.2	2.1	0.5	..	..	..	..	..	..
1997-98	20.1	6.9	18.0	..	..	..	..	..	..
MONTHLY									
<b>1997-98</b>									
January	2 883	483	3 366	3 663	630	4 293	3 567	643	4 211
February	3 340	640	3 980	3 413	688	4 100	3 588	654	4 241
March	3 661	687	4 348	3 441	626	4 067	3 675	660	4 336
April	3 385	678	4 063	3 820	706	4 526	3 809	666	4 474
May	3 693	686	4 379	4 005	647	4 653	3 937	668	4 605
June	4 889	872	5 761	4 172	632	4 804	4 009	670	4 679
<b>1998-99</b>									
July	4 411	681	5 092	4 233	678	4 911	3 992	673	4 665
August	3 864	676	4 540	3 837	751	4 588	3 893	675	4 569
September	3 569	597	4 166	3 471	632	4 102	3 744	676	4 419
October	3 677	560	4 237	3 609	623	4 232	3 608	670	4 278
November	3 803	672	4 475	3 635	705	4 340	3 532	658	4 190
December	3 624	718	4 342	3 425	666	4 092	3 513	640	4 153
January	2 603	442	3 045	3 512	599	4 111	3 526	622	4 147
February	3 355	568	3 923	3 428	610	4 037	3 556	602	4 157
March	4 165	644	4 809	3 820	552	4 372	3 601	588	4 189
PERCENTAGE CHANGE FROM PREVIOUS MONTH									
<b>1997-98</b>									
January	-23.8	-31.2	-24.9	1.5	-4.0	0.7	-0.4	2.6	0.1
February	15.9	32.5	18.2	-6.8	9.2	-4.5	0.6	1.7	0.7
March	9.6	7.3	9.2	0.8	-9.0	-0.8	2.4	0.9	2.2
April	-7.5	-1.3	-6.6	11.0	12.8	11.3	3.6	0.9	3.2
May	9.1	1.2	7.8	4.8	-8.4	2.8	3.4	0.3	2.9
June	32.4	27.1	31.6	4.2	-2.3	3.2	1.8	0.3	1.4
<b>1998-99</b>									
July	-9.8	-21.9	-11.6	1.5	7.3	2.2	-0.4	0.4	-0.3
August	-12.4	-0.7	-10.8	-9.4	10.8	-6.6	-2.5	0.3	-2.1
September	-7.6	-11.7	-8.2	-9.5	-15.8	-10.6	-3.8	0.1	-3.3
October	3.0	-6.2	1.7	4.0	-1.4	3.2	-3.6	-0.9	-3.2
November	3.4	20.0	5.6	0.7	13.2	2.6	-2.1	-1.8	-2.1
December	-4.7	6.8	-3.0	-5.8	-5.5	-5.7	-0.5	-2.7	-0.9
January	-28.2	-38.4	-29.9	2.5	-10.1	0.5	0.4	-2.8	-0.1
February	28.9	28.5	28.8	-2.4	1.8	-1.8	0.9	-3.2	0.2
March	24.1	13.4	22.6	11.4	-9.5	8.3	1.3	-2.3	0.8

Period	INDUSTRY.....			Total	TYPE OF ASSET.....	
	Mining	Manu- facturing	Other selected industries		New buildings and structures	Equipment, plant and machinery
ANNUAL (\$m)						
1992-93	230	598	767	1 595	436	1 159
1993-94	97	653	809	1 562	376	1 184
1994-95	117	875	1 272	2 263	372	1 891
1995-96	196	756	921	1 873	358	1 515
1996-97	489	840	1 251	2 580	595	1 985
1997-98	1 366	820	1 006	3 193	793	2 400
PERCENTAGE CHANGE FROM PREVIOUS YEAR						
1992-93	18.9	-21.7	14.8	-1.9	11.2	-6.0
1993-94	-57.7	9.2	5.5	-2.1	-13.8	2.2
1994-95	20.4	34.0	57.2	44.9	-1.1	59.7
1995-96	67.5	-13.6	-27.6	-17.2	-3.8	-19.9
1996-97	149.5	11.1	35.8	37.7	66.2	31.0
1997-98	179.3	-2.4	-19.6	23.8	33.3	20.9
QUARTERLY, ORIGINAL (\$m)						
<b>1997-98</b>						
September	345	170	201	716	159	557
December	447	265	241	953	196	757
March	360	168	193	721	188	534
June	215	217	370	802	250	552
<b>1998-99</b>						
September	125	154	322	601	157	444
December	150	248	267	665	170	495
PERCENTAGE CHANGE FROM PREVIOUS QUARTER, ORIGINAL						
<b>1997-98</b>						
September	29.2	-23.1	-14.1	-0.6	-0.6	-1.1
December	29.6	55.9	19.9	33.1	23.3	35.9
March	-19.5	-36.6	-19.9	-24.3	-4.1	-29.5
June	-40.3	29.2	91.7	11.2	33.0	3.4
<b>1998-99</b>						
September	-41.9	-29.0	-13.0	-25.1	-37.2	-19.6
December	20.0	61.0	-17.1	10.6	8.3	11.5
QUARTERLY, TREND (\$m)						
<b>1997-98</b>						
September	n.a.	n.a.	n.a.	772	161	611
December	n.a.	n.a.	n.a.	822	187	635
March	n.a.	n.a.	n.a.	822	214	608
June	n.a.	n.a.	n.a.	762	214	548
<b>1998-99</b>						
September	n.a.	n.a.	n.a.	673	187	485
December	n.a.	n.a.	n.a.	581	156	425
PERCENTAGE CHANGE FROM PREVIOUS QUARTER, TREND						
<b>1997-98</b>						
September	..	..	..	10.6	2.5	12.9
December	..	..	..	6.5	16.1	3.9
March	..	..	..	0.0	14.4	-4.3
June	..	..	..	-7.3	0.0	-9.9
<b>1998-99</b>						
September	..	..	..	-11.7	-12.6	-11.5
December	..	..	..	-13.7	-16.6	-12.4

Period	HOTELS WITH FACILITIES.....			MOTELS AND GUESTHOUSES...			SERVICED APARTMENTS.....		
	Guest rooms	Room occupancy	Takings	Flats, units and houses	Room occupancy	Takings	Guest rooms	Room occupancy	Takings
	no.	%	\$'000	no.	%	\$'000	no.	%	\$'000
.....									
QUARTERLY									
<b>1996-97</b>									
June	3 819	54.1	18 460	5 197	50.3	16 835	624	61.4	2 624
September	3 875	56.2	19 193	5 179	51.3	17 420	624	57.9	2 714
December	3 855	61.3	22 156	5 225	57.9	19 960	626	67.3	3 269
<b>1997-98</b>									
June	4 048	53.6	19 048	5 136	52.8	17 773	750	59.4	3 551
September	4 048	57.2	21 068	5 112	51.7	17 805	740	56.3	3 667
December	4 053	63.0	24 954	5 135	58.1	19 990	888	66.0	4 884
.....									
PERCENTAGE CHANGE FROM PREVIOUS YEAR									
<b>1997-98</b>									
June	6.0	..	3.2	-1.2	..	5.6	20.2	..	35.3
September	4.5	..	9.8	-1.3	..	2.2	18.6	..	35.1
December	5.1	..	12.6	-1.7	..	0.2	41.9	..	49.4
.....									

Period	HOUSES.....		TOTAL DWELLING UNITS.....		Alterations and additions to residential building	Total residential building	Non-residential building	Total building
	Private sector	Total	Private sector	Total				
	no.	no.	no.	no.				
					\$m	\$m	\$m	\$m
ANNUAL								
1992-93	9 715	10 091	11 548	12 341	133	973	418	1 392
1993-94	9 474	9 905	11 046	11 777	122	961	375	1 336
1994-95	7 765	8 155	9 208	9 762	120	860	493	1 353
1995-96	4 938	5 117	5 760	5 968	119	588	566	1 155
1996-97	5 512	5 608	6 148	6 264	117	632	581	1 213
1997-98	6 187	6 380	6 997	7 215	128	758	602	1 360
MONTHLY, ORIGINAL								
<b>1997-98</b>								
March	623	671	686	738	10.7	74.3	53.8	128.1
April	461	472	491	502	9.6	53.6	34.6	88.3
May	515	527	588	602	9.2	64.4	38.2	102.6
June	610	641	771	810	10.2	80.3	36.5	116.8
<b>1998-99</b>								
July	654	660	893	901	11.8	90.4	40.2	130.6
August	528	536	622	634	10.6	69.1	72.1	141.2
September	600	625	717	742	13.1	116.5	46.9	163.5
October	518	542	561	585	10.8	66.3	40.5	106.9
November	540	553	587	606	12.4	70.4	58.3	128.7
December	489	496	556	563	10.0	60.3	53.5	113.7
January	361	371	434	444	9.5	55.1	68.0	123.1
February	494	510	591	607	12.4	70.6	118.4	189.0
March	644	683	711	750	14.6	83.7	56.1	139.8
MONTHLY, TREND								
<b>1997-98</b>								
March	548	562	624	641	9.8	65.3	38.1	103.4
April	548	563	639	656	9.9	67.1	37.1	104.2
May	545	559	654	670	10.1	70.3	37.3	107.5
June	540	555	664	678	10.3	74.2	38.6	112.8
<b>1998-99</b>								
July	537	552	663	679	10.5	77.4	40.3	117.7
August	534	551	651	670	10.6	78.7	44.1	122.8
September	530	548	627	649	10.6	77.8	50.8	128.6
October	524	544	601	626	10.8	75.3	57.8	133.1
November	521	541	588	614	11.2	72.8	63.2	135.9
December	527	547	596	621	11.8	71.7	65.4	137.1
January	537	556	612	636	12.5	72.0	64.7	136.6
February	549	567	631	654	13.2	73.3	61.2	134.6
March	560	577	644	664	13.8	73.4	57.6	131.0
PERCENTAGE CHANGE FROM PREVIOUS MONTH, TREND								
<b>1997-98</b>								
February	1.8	1.6	2.3	2.3	-2.1	1.8	-2.9	-0.1
March	0.9	0.8	2.1	2.0	-1.3	1.3	-3.9	-0.7
April	0.1	0.1	2.4	2.2	0.6	2.7	-2.7	0.7
May	-0.6	-0.7	2.4	2.1	1.9	4.8	0.5	3.2
June	-0.9	-0.8	1.4	1.3	2.5	5.7	3.5	4.9
<b>1998-99</b>								
July	-0.6	-0.5	-0.1	0.1	1.8	4.2	4.5	4.3
August	-0.5	-0.2	-1.9	-1.4	0.6	1.7	9.4	4.3
September	-0.8	-0.4	-3.6	-3.0	0.5	-1.1	15.1	4.7
October	-1.1	-0.8	-4.2	-3.6	1.5	-3.2	13.8	3.5
November	-0.6	-0.5	-2.2	-1.9	3.4	-3.4	9.3	2.1
December	1.1	1.0	1.3	1.2	5.2	-1.6	3.6	0.8
January	1.8	1.6	2.8	2.4	6.1	0.4	-1.1	-0.3
February	2.3	2.1	3.1	2.8	5.8	1.9	-5.3	-1.5
March	2.0	1.8	1.9	1.6	4.9	0.1	-5.9	-2.6

# 13

## BUILDING COMMENCEMENTS

Period	NEW HOUSES.....		TOTAL DWELLING UNITS(a).....				NON-RESIDENTIAL BUILDING.....		
	Private sector	Total	Private sector	Total	New residential building	Alterations and additions to residential building	Private sector	Total	Total building
	no.	no.	no.	no.	\$m	\$m	\$m	\$m	\$m
ANNUAL									
1992-93	9 122	9 416	10 889	11 646	816.2	122.4	205.5	458.7	1 397.2
1993-94	9 159	9 590	10 712	11 501	845.3	126.5	209.9	373.0	1 344.8
1994-95	7 745	8 210	9 132	9 796	765.5	125.3	251.7	518.5	1 409.3
1995-96	4 837	5 071	5 691	5 960	496.5	121.7	452.8	631.8	1 250.0
1996-97	5 057	5 112	5 727	5 789	496.3	116.9	423.4	568.8	1 181.9
1997-98	5 628	5 823	6 437	6 653	614.7	134.5	419.0	550.7	1 299.9
QUARTERLY									
<b>1996-97</b>									
December	1 245	1 262	1 513	1 530	133.8	33.8	85.3	113.2	280.8
March	1 099	1 102	1 242	1 247	106.3	26.2	76.6	121.2	253.6
June	1 522	1 541	1 670	1 691	147.5	30.7	193.5	230.2	408.4
<b>1997-98</b>									
September	1 354	1 402	1 489	1 541	131.9	31.6	84.5	112.3	275.8
December	1 531	1 588	1 841	1 906	179.8	33.8	139.2	174.1	387.7
March	1 409	1 436	1 617	1 648	150.1	38.7	68.1	95.2	284.0
June	1 334	1 397	1 490	1 558	152.9	30.4	134.5	169.1	352.4
<b>1998-99</b>									
September	1 563	1 610	1 927	1 980	184.7	35.0	89.5	131.1	350.7
December	1 611	1 666	1 858	1 932	228.0	33.7	90.1	128.9	390.6

(a) Includes conversions.

# 14

## VALUE OF BUILDING WORK DONE DURING PERIOD

Period	NEW HOUSES....		NEW RESIDENTIAL BUILDING.....		Alterations and additions to residential building	NON-RESIDENTIAL BUILDING.....		TOTAL BUILDING.....	
	Private sector	Total	Private sector	Total		Private sector	Total	Private sector	Total
	\$m	\$m	\$m	\$m		\$m	\$m	\$m	\$m
ANNUAL									
1992-93	647.2	660.9	743.8	780.6	127.1	297.9	570.9	1 166.3	1 478.6
1993-94	719.1	746.4	828.9	876.3	132.0	217.7	462.1	1 177.2	1 470.4
1994-95	659.6	693.6	766.1	816.4	129.4	271.6	476.9	1 164.3	1 422.7
1995-96	441.4	460.5	512.9	534.8	130.6	311.4	542.1	953.2	1 207.5
1996-97	433.9	438.9	485.2	490.4	122.2	444.2	663.3	1 049.8	1 275.9
1997-98	523.7	535.7	590.9	605.4	131.6	534.6	685.0	1 255.0	1 422.0
QUARTERLY									
<b>1996-97</b>									
December	109.1	110.6	121.3	122.8	35.4	119.6	189.8	276.0	348.0
March	99.9	100.3	114.1	114.6	26.8	100.8	147.8	241.6	289.2
June	127.6	128.7	140.5	141.7	32.0	140.4	181.9	312.8	355.6
<b>1997-98</b>									
September	122.5	125.8	136.3	139.9	32.9	149.8	186.7	318.5	359.4
December	134.0	137.7	152.3	157.1	36.2	157.7	197.7	345.2	391.0
March	130.5	132.8	147.4	149.9	31.4	119.1	149.2	297.7	330.4
June	135.9	139.4	154.5	158.5	31.2	112.3	151.5	297.9	341.1
<b>1998-99</b>									
September	150.8	155.8	175.8	180.9	39.8	135.5	162.9	350.1	383.6
December	147.9	151.6	181.8	186.0	39.8	118.7	157.2	340.1	383.0

Period	Pigmeat	Beef	Mutton	Lamb	Gas	Coal	Sawn timber(a)
	tonnes	tonnes	tonnes	tonnes	m MJ	tonnes	m <sup>3</sup>
ANNUAL							
1991-92	34 538	90 661	72 578	29 941	78 210	2 819 880	271 603
1992-93	38 153	96 338	65 689	39 334	83 000	2 753 610	317 096
1993-94	38 394	94 395	71 354	45 199	89 382	2 643 000	364 961
1994-95	32 063	99 108	66 759	36 147	86 123	2 554 560	392 349
1995-96	31 695	89 704	55 600	37 735	76 074	2 409 120	413 545
1996-97	29 842	85 478	51 778	34 890	76 495	2 633 820	333 691
1997-98	26 384	80 924	58 554	38 224	78 440	2 815 870	361 257

PERCENTAGE CHANGE FROM PREVIOUS YEAR							
1991-92	-10.6	4.2	10.9	-6.5	6.7	15.5	13.1
1992-93	10.5	6.3	-9.5	31.4	6.1	-2.4	16.7
1993-94	0.6	-2.0	8.6	14.9	7.7	-4.0	15.1
1994-95	-16.5	5.0	-6.4	-20.0	-3.6	-3.3	7.5
1995-96	-1.1	-9.5	-16.7	4.4	-11.7	-5.7	5.4
1996-97	-5.8	-4.7	-6.9	-7.5	0.6	9.3	-19.3
1997-98	-11.6	-5.3	13.1	9.6	2.5	6.9	8.3

QUARTERLY							
<b>1997-98</b>							
September	7 431	18 704	10 889	6 594	21 942	752 868	91 537
December	6 301	22 324	16 769	9 963	18 997	610 208	83 957
March	6 731	21 110	20 144	10 561	18 098	718 990	89 540
June	5 921	18 786	10 752	11 106	19 404	733 804	96 223
<b>1998-99</b>							
September	5 253	15 129	10 342	10 733	23 573	748 575	95 339
December	4 646	17 514	15 721	10 982	19 718	671 040	94 578
March	5 174	14 670	14 093	10 079	19 343	826 095	88 282

PERCENTAGE CHANGE FROM PREVIOUS QUARTER							
<b>1997-98</b>							
September	-5.5	-19.2	-7.7	-35.5	10.9	4.5	9.3
December	-15.2	19.4	54.0	51.1	-13.4	-18.9	-8.3
March	6.8	-5.4	20.1	6.0	-4.7	17.8	6.6
June	-12.0	-11.0	-46.6	5.2	7.2	2.1	7.5
<b>1998-99</b>							
September	-11.3	-19.5	-3.8	-3.4	21.5	4.0	-0.9
December	-11.6	15.8	52.0	2.3	-16.4	-10.4	-0.8
March	11.4	-16.2	-10.4	-8.2	-1.9	23.1	-6.7

(a) From Australian softwood logs only.

Period	Food	Clothing	Housing	Household equipment and operation	Transport- ation	Tobacco and alcohol	Health and personal care	Recreation and education	All groups
ANNUAL AVERAGE (1989-90 = 100)									
1992-93	109.3	107.0	94.3	107.6	115.0	131.2	134.9	110.7	111.2
1993-94	111.7	106.6	92.1	108.0	117.8	141.5	142.7	113.7	113.4
1994-95	115.1	104.9	97.8	109.2	120.2	148.9	151.3	116.3	116.9
1995-96	118.2	105.1	103.6	112.1	124.5	160.1	158.9	118.0	121.2
1996-97	120.8	105.5	98.9	113.4	124.6	165.3	165.4	121.1	122.3
1997-98	122.7	105.7	90.7	113.7	122.1	169.3	165.4	124.7	121.6
PERCENTAGE CHANGE FROM PREVIOUS YEAR, ANNUAL AVERAGE									
1992-93	3.1	1.6	-6.1	0.1	4.1	10.6	5.6	2.8	2.1
1993-94	2.2	-0.4	-2.3	0.4	2.4	7.9	5.8	2.7	2.0
1994-95	3.0	-1.6	6.2	1.1	2.0	5.2	6.0	2.2	3.1
1995-96	2.7	0.2	5.9	2.7	3.6	7.6	5.0	1.5	3.7
1996-97	2.2	0.3	-4.5	1.2	0.0	3.3	4.1	2.6	0.9
1997-98	1.6	0.2	-8.3	0.2	-1.9	2.4	0.0	3.0	-0.6
QUARTERLY (1989-90 = 100.0)									
<b>1997-98</b>									
December	122.0	106.2	90.2	113.6	122.3	168.8	164.1	123.6	121.2
March	122.9	105.1	89.9	113.7	121.2	170.7	167.8	125.5	121.7
June	123.7	105.9	90.3	113.9	121.8	170.5	171.1	126.1	122.4
<b>1998-99</b>									
September	125.9	105.3	91.2	113.7	121.8	170.7	171.8	125.9	123.0
December	128.2	105.4	91.9	113.9	121.3	171.4	170.9	126.5	123.6
March	128.0	103.7	92.2	112.3	120.9	171.8	156.6	128.6	122.7
PERCENTAGE CHANGE FROM SAME QUARTER OF PREVIOUS YEAR									
<b>1997-98</b>									
December	1.1	0.2	-10.2	-0.2	-2.5	2.4	-0.5	3.2	-1.1
March	1.4	0.0	-7.8	0.4	-3.5	3.3	0.1	2.6	-0.7
June	1.5	0.7	-4.0	0.3	-0.7	2.4	1.8	2.6	0.4
<b>1998-99</b>									
September	3.2	-0.1	-1.1	0.1	-1.1	2.1	8.3	1.8	1.5
December	5.1	-0.8	1.9	0.3	-0.8	1.5	4.1	2.3	2.0
March	4.1	-1.3	2.6	-1.2	-0.2	0.6	-6.7	2.5	0.8
PERCENTAGE CHANGE FROM PREVIOUS QUARTER									
<b>1997-98</b>									
December	0.0	0.8	-2.2	0.0	-0.7	1.0	3.5	-0.1	0.0
March	0.7	-1.0	-0.3	0.1	-0.9	1.1	2.3	1.5	0.4
June	0.7	0.8	0.4	0.2	0.5	-0.1	2.0	0.5	0.6
<b>1998-99</b>									
September	1.8	-0.6	1.0	-0.2	0.0	0.1	0.4	-0.2	0.5
December	1.8	0.1	0.8	0.2	-0.4	0.4	-0.5	0.5	0.5
March	-0.2	-1.6	0.3	-1.4	-0.3	0.2	-8.4	1.7	-0.7



Item	Unit	QUARTER.....				
		Mar 1998	June 1998	Sep 1998	Dec 1998	Mar 1999
		cents	cents	cents	cents	cents
Milk, carton, supermarket sales	1 L	124	127	127	132	136
Cheese, processed, sliced, wrapped	500 g	322	323	335	312	320
Butter	500 g	167	175	164	175	180
Bread, white loaf, sliced, supermarket sales	680 g	163	165	169	167	161
Self-raising flour	2 kg	236	235	239	249	247
Beef						
Rump steak	1 kg	1 098	1 197	1 109	1 156	1 193
Corned silverside	1 kg	590	596	629	638	586
Lamb						
Leg	1 kg	535	534	554	565	566
Loin chops	1 kg	796	794	788	846	842
Forequarter chops	1 kg	575	577	551	582	580
Pork						
Leg	1 kg	618	601	576	571	589
Loin chops	1 kg	788	812	791	803	829
Chicken, frozen	1 kg	351	362	367	332	365
Bacon, middle rashers	250 g pkt	295	322	304	293	287
Sausages	1 kg	351	357	369	372	357
Potatoes	1 kg	104	69	62	86	82
Onions	1 kg	165	122	175	188	125
Peaches, canned	825 g	185	193	196	206	199
Eggs, 55g	doz.	235	238	240	245	243
Sugar, white	2 kg	183	201	210	202	207
Tea	250 g	183	217	214	220	216
Coffee, instant, jar	150 g	592	588	570	563	556
Margarine, polyunsaturated	500 g	142	141	161	172	154
Petrol						
Leaded	1 L	75.0	71.5	71.0	69.5	68.3
Unleaded	1 L	72.6	72.0	68.6	67.2	65.9

## NET MIGRATION.....

<i>Period</i>	<i>Live births(a)</i>	<i>Deaths(a)</i>	<i>Natural increase</i>	<i>Interstate</i>	<i>Overseas(b)</i>	<i>Total increase</i>	<i>Population at end of period</i>
ANNUAL							
1992-93	19 686	11 163	8 468	-5 210	1 546	5 299	1 460 730
1993-94	20 036	11 743	8 006	-3 978	1 994	6 477	1 466 127
1994-95	19 569	11 501	7 953	-7 069	2 883	4 256	1 469 411
1995-96	18 959	11 294	7 500	-6 192	3 653	5 526	1 474 253
1996-97	18 945	11 683	6 951	-4 628	3 104	5 553	1 479 680
1997-98	18 094	11 496	6 574	-3 254	4 294	7 614	1 487 294
MONTHLY/QUARTERLY							
<b>1996-97</b>							
September	1 464	977	1 575	-1 508	1 068	731	1 475 245
October	1 779	1 196	..	..	..	..	..
November	1 536	835	..	..	..	..	..
December	1 424	920	1 796	-1 221	758	1 333	1 476 578
January	1 582	911	..	..	..	..	..
February	1 498	827	..	..	..	..	..
March	1 301	758	2 051	-1 037	1 142	2 156	1 478 734
April	1 673	935	..	..	..	..	..
May	1 805	1 080	..	..	..	..	..
June	1 492	959	1 672	-862	136	946	1 479 680
<b>1997-98</b>							
July	1 624	1 099	..	..	..	..	..
August	1 448	1 066	..	..	..	..	..
September	1 481	1 068	1 322	-755	1 124	1 691	1 481 371
October	1 581	1 116	..	..	..	..	..
November	1 460	877	..	..	..	..	..
December	1 459	960	1 544	-1 098	598	1 044	1 482 415
January	1 529	885	..	..	..	..	..
February	1 403	859	..	..	..	..	..
March	1 653	820	2 083	-591	2 027	3 519	1 485 934
April	1 458	923	..	..	..	..	..
May	1 492	898	..	..	..	..	..
June	1 513	1 046	1 625	-810	545	1 360	1 487 294
July	1 639	1 327	..	..	..	..	..
August	1 430	1 028	..	..	..	..	..
September	1 590	1 161	1 188	-422	778	1 544	1 488 838

(a) Registrations.

(b) Includes category jumping.

Period	EMPLOYED FULL-TIME.....		EMPLOYED PART-TIME.....		TOTAL EMPLOYED.....		UNEMPLOYED...		LABOUR FORCE.....	
	Males	Females	Males	Females	Males	Females	Males	Females	Males	Females
ANNUAL AVERAGE ('000)										
1992-93	322.2	143.2	39.2	126.8	361.4	270.0	51.9	29.9	413.3	299.9
1993-94	322.0	146.3	40.0	127.0	362.0	273.3	47.3	29.9	409.3	303.2
1994-95	323.1	151.5	42.6	131.3	365.7	282.8	44.6	28.7	410.3	311.5
1995-96	325.2	150.0	45.5	136.7	370.7	286.7	42.6	26.0	413.2	312.7
1996-97	320.8	150.5	48.6	140.7	369.4	291.2	42.1	27.5	411.5	318.7
1997-98	317.5	145.9	48.8	136.4	366.3	282.3	42.1	28.8	408.4	311.0
MONTHLY, ORIGINAL ('000)										
<b>1997-98</b>										
March	312.9	148.1	50.1	129.7	363.1	277.9	41.3	32.1	404.4	309.9
April	313.3	145.2	52.0	133.6	365.3	278.8	38.7	28.6	404.0	307.3
May	310.5	142.7	48.6	132.2	359.1	274.8	42.0	30.0	401.1	304.8
June	314.2	140.8	49.7	131.8	363.9	272.5	38.7	29.2	402.6	301.7
<b>1998-99</b>										
July	317.9	145.3	44.6	128.0	362.5	273.3	42.3	26.5	404.8	299.8
August	316.6	144.1	47.0	131.1	363.6	275.2	42.6	29.1	406.2	304.3
September	322.6	147.7	44.7	136.6	367.3	284.3	44.6	27.4	411.9	311.7
October	318.8	148.8	47.1	137.7	366.0	286.4	40.5	24.1	406.5	310.5
November	320.5	147.1	46.6	139.0	367.1	286.1	42.7	25.2	409.8	311.4
December	323.6	150.8	51.0	141.7	374.6	292.5	42.1	24.7	416.6	317.3
January	315.4	147.2	49.5	131.2	364.9	278.4	45.4	29.5	410.3	308.0
February	320.7	150.6	51.1	134.4	371.8	285.0	40.6	28.3	412.4	313.3
March	322.9	147.4	48.0	141.1	370.8	288.5	38.6	27.7	409.4	316.2
April	316.4	149.2	50.9	138.6	367.4	287.8	35.2	24.0	402.5	311.8
MONTHLY, TREND ('000)										
<b>1997-98</b>										
March	315.9	146.5	48.0	131.5	363.9	278.0	41.3	29.4	405.2	307.4
April	315.1	145.6	48.1	130.1	363.2	275.7	41.3	29.7	404.5	305.4
May	314.9	145.0	48.1	129.2	363.0	274.2	41.7	29.8	404.7	304.0
June	315.5	144.9	47.7	129.0	363.2	273.9	42.1	29.7	405.3	303.6
<b>1998-99</b>										
July	316.7	145.3	47.0	129.7	363.7	275.0	42.6	29.4	406.3	304.4
August	317.8	146.0	46.7	131.4	364.5	277.4	43.0	28.7	407.5	306.1
September	318.3	146.7	47.1	133.9	365.4	280.6	43.2	27.8	408.6	308.4
October	318.5	147.2	47.9	136.4	366.4	283.6	43.0	26.9	409.4	310.5
November	318.5	147.3	49.0	138.5	367.5	285.8	42.5	26.3	410.0	312.1
December	318.7	147.3	49.7	139.6	368.4	286.9	41.7	26.0	410.1	312.9
January	319.3	147.6	49.8	139.6	369.1	287.2	40.7	25.7	409.8	312.9
February	320.1	148.0	49.5	139.4	369.6	287.4	39.5	25.5	409.1	312.9
March	320.9	148.6	49.0	138.9	369.9	287.5	38.3	25.3	408.2	312.8
April	321.8	149.3	48.1	138.1	369.9	287.4	37.2	25.2	407.1	312.6
PERCENTAGE CHANGE FROM PREVIOUS MONTH, TREND										
<b>1997-98</b>										
March	-0.3	-0.3	0.4	-1.6	-0.2	-0.9	-0.7	1.0	-0.3	-0.7
April	-0.3	-0.6	0.2	-1.1	-0.2	-0.8	0.0	1.0	-0.2	-0.7
May	-0.1	-0.4	0.0	-0.7	-0.1	-0.5	1.0	0.3	0.0	-0.5
June	0.2	-0.1	-0.8	-0.2	0.1	-0.1	1.0	-0.3	0.1	-0.1
<b>1998-99</b>										
July	0.4	0.3	-1.5	0.5	0.1	0.9	1.2	-1.0	0.2	0.3
August	0.3	0.5	-0.6	1.3	0.2	0.9	0.9	-2.4	0.3	0.6
September	0.2	0.5	0.9	1.9	0.2	1.2	0.5	-3.1	0.3	0.8
October	0.1	0.3	1.7	1.9	0.3	1.1	-0.5	-3.2	0.2	0.7
November	0.0	0.1	2.3	1.5	0.3	0.8	-1.2	-2.2	0.1	0.5
December	0.1	0.0	1.4	0.8	0.2	0.4	-1.9	-1.1	0.0	0.3
January	0.2	0.2	0.2	0.0	0.2	0.1	-2.4	-1.2	-0.1	0.0
February	0.3	0.3	-0.6	-0.1	0.1	0.1	-2.9	-0.8	-0.2	0.0
March	0.2	0.4	-1.0	-0.4	0.1	0.0	-3.0	-0.8	-0.2	0.0
April	0.3	0.5	-1.8	-0.6	0.0	0.0	-2.9	-0.4	-0.3	-0.1

(a) Population aged 15 and over.

Period	CIVILIAN POPULATION.....		UNEMPLOYMENT RATE.....				PARTICIPATION RATE...		
	Males aged 15 and over	Females aged 15 and over	Persons aged 15-19	Males all ages	Females all ages	Persons all ages	Males	Females	Persons
	'000	'000	%	%	%	%	%	%	%
ANNUAL AVERAGE									
1992-93	567.4	588.9	26.6	12.6	10.0	11.5	72.8	51.0	61.7
1993-94	570.6	592.0	28.3	11.5	9.8	10.8	71.7	51.2	61.3
1994-95	573.7	594.7	25.2	10.9	9.2	10.2	71.5	52.4	61.8
1995-96	576.2	597.1	27.2	10.3	8.3	9.5	71.7	52.4	61.9
1996-97	579.8	600.6	23.7	10.2	8.6	9.5	71.0	53.1	61.9
1997-98	583.9	604.5	23.2	10.3	9.2	9.8	70.8	51.5	61.0
PERCENTAGE CHANGE FROM PREVIOUS YEAR									
1992-93	0.6	0.6	..	..	..	..	..	..	..
1993-94	0.6	0.6	..	..	..	..	..	..	..
1994-95	0.6	0.5	..	..	..	..	..	..	..
1995-96	0.4	0.5	..	..	..	..	..	..	..
1996-97	0.6	0.4	..	..	..	..	..	..	..
1997-98	0.7	0.6	..	..	..	..	..	..	..
MONTHLY, ORIGINAL									
<b>1997-98</b>									
January	579.1	605.6	26.5	11.1	10.7	10.9	70.7	50.8	60.5
February	579.5	606.0	24.8	11.1	10.0	10.6	70.6	51.3	60.7
March	579.9	606.4	26.1	10.2	10.3	10.3	69.7	51.1	60.2
April	580.2	606.7	23.0	9.6	9.3	9.5	69.6	50.7	59.9
May	580.5	607.0	24.8	10.5	9.8	10.2	69.1	50.2	59.5
June	580.7	607.3	19.9	9.6	9.7	9.6	69.3	49.7	59.3
<b>1998-99</b>									
July	581.1	607.7	23.0	10.5	8.8	9.8	69.7	49.3	59.3
August	581.4	608.0	23.3	10.5	9.6	10.1	69.9	50.0	59.7
September	581.7	608.4	23.1	10.8	8.8	9.9	70.8	51.2	60.8
October	582.2	608.8	23.1	10.0	7.8	9.0	69.8	51.0	60.2
November	582.6	609.2	21.2	10.4	8.1	9.4	70.3	51.1	60.5
December	583.0	609.7	19.8	10.1	7.8	9.1	71.5	52.0	61.5
January	583.4	610.1	20.1	11.1	9.6	10.4	70.3	50.5	60.2
February	583.8	610.5	20.4	9.8	9.0	9.5	70.6	51.3	60.8
March	584.2	610.9	21.8	9.4	8.8	9.1	70.1	51.8	60.7
April	584.6	611.3	17.9	8.7	7.7	8.3	68.9	51.0	59.7
MONTHLY, TREND									
<b>1997-98</b>									
January	n.a.	n.a.	n.a.	10.3	9.3	9.9	70.5	51.5	60.8
February	n.a.	n.a.	n.a.	10.2	9.4	9.9	70.1	51.1	60.4
March	n.a.	n.a.	n.a.	10.2	9.6	9.9	69.9	50.7	60.1
April	n.a.	n.a.	n.a.	10.2	9.7	10.0	69.7	50.3	59.8
May	n.a.	n.a.	n.a.	10.3	9.8	10.1	69.7	50.1	59.7
June	n.a.	n.a.	n.a.	10.4	9.8	10.1	69.8	50.0	59.7
<b>1998-99</b>									
July	n.a.	n.a.	n.a.	10.5	9.6	10.1	69.9	50.1	59.8
August	n.a.	n.a.	n.a.	10.6	9.4	10.0	70.1	50.3	60.0
September	n.a.	n.a.	n.a.	10.6	9.0	9.9	70.2	50.7	60.2
October	n.a.	n.a.	n.a.	10.5	8.7	9.7	70.3	51.0	60.5
November	n.a.	n.a.	n.a.	10.4	8.4	9.5	70.4	51.2	60.6
December	n.a.	n.a.	n.a.	10.2	8.3	9.4	70.3	51.3	60.6
January	n.a.	n.a.	n.a.	9.9	8.2	9.2	70.2	51.3	60.6
February	n.a.	n.a.	n.a.	9.6	8.2	9.0	70.1	51.3	60.5
March	n.a.	n.a.	n.a.	9.4	8.1	8.8	69.9	51.2	60.3
April	n.a.	n.a.	n.a.	9.1	8.1	8.7	69.7	51.1	60.2

(a) Population aged 15 and over.

# 21

## AVERAGE WEEKLY EARNINGS OF EMPLOYEES

Period	FULL-TIME ADULTS ORDINARY TIME EARNINGS			FULL-TIME ADULTS TOTAL EARNINGS.....			ALL EMPLOYEES TOTAL EARNINGS.....		
	Males	Females	Persons	Males	Females	Persons	Males	Females	Persons
ANNUAL AVERAGE (\$ per week)									
1992-93	610.10	534.90	585.40	646.40	546.80	613.70	560.00	382.60	477.40
1993-94	625.10	547.60	600.00	667.50	560.10	632.70	595.10	396.60	503.30
1994-95	632.70	559.10	608.20	681.70	572.50	645.30	599.90	411.90	513.40
1995-96	653.80	555.90	622.80	703.20	568.50	660.10	620.10	403.90	520.70
1996-97	678.20	575.10	644.30	735.10	589.40	687.20	636.90	408.70	529.80
1997-98	705.60	606.05	670.53	755.05	619.33	707.20	646.28	438.50	545.70
PERCENTAGE CHANGE FROM PREVIOUS YEAR									
1992-93	3.7	2.1	3.1	3.4	2.4	3.0	-0.8	-1.1	-1.3
1993-94	2.5	2.4	2.5	3.3	2.4	3.1	6.3	3.7	5.4
1994-95	1.2	2.1	1.4	2.1	2.2	2.0	0.8	3.9	2.0
1995-96	3.3	-0.6	2.4	3.1	-0.7	2.3	3.4	-1.9	1.4
1996-97	3.7	3.5	3.5	4.5	3.7	4.1	2.7	1.2	1.8
1997-98	4.0	5.4	4.1	2.7	5.1	2.9	1.5	7.3	3.0
QUARTERLY (\$ per week)									
<b>1997-98</b>									
21 November	689.70	594.20	655.00	739.90	607.40	691.80	631.70	433.90	533.90
20 February	715.10	626.20	683.60	764.60	642.10	721.20	656.10	447.70	553.60
15 May	713.80	620.10	680.10	759.50	634.30	714.40	646.30	452.40	552.80
<b>1998-99</b>									
21 August	737.50	623.50	694.70	785.60	636.30	729.60	670.40	462.10	569.60
20 November	745.20	631.50	702.50	811.60	652.90	752.00	679.00	471.50	580.30
19 February	739.90	632.00	699.60	796.20	651.90	742.30	677.40	466.50	574.90
PERCENTAGE CHANGE FROM CORRESPONDING REFERENCE DATE IN PREVIOUS YEAR									
<b>1997-98</b>									
21 November	3.0	3.3	2.4	1.6	2.6	1.0	0.8	7.9	2.2
20 February	4.3	8.3	5.2	3.1	8.1	4.2	2.5	9.3	4.3
15 May	3.3	6.1	3.7	1.3	6.2	2.2	-0.9	7.8	1.9
<b>1998-99</b>									
21 August	4.8	6.8	4.7	3.9	7.2	4.0	3.0	10.0	5.0
20 November	8.0	6.3	7.3	9.7	7.5	8.7	7.5	8.7	8.7
19 February	3.5	0.9	2.3	4.1	1.5	2.9	3.2	4.2	3.8
PERCENTAGE CHANGE FROM PREVIOUS REFERENCE DATE									
<b>1997-98</b>									
21 November	-2.0	1.8	-1.3	-2.2	2.3	-1.4	-3.0	3.3	-1.6
20 February	3.7	5.4	4.4	3.3	5.7	4.2	3.9	3.2	3.7
15 May	-0.2	-1.0	-0.5	-0.7	-1.2	-0.9	-1.5	1.0	-0.1
<b>1998-99</b>									
21 August	3.3	0.6	2.2	3.4	0.3	2.1	3.7	2.1	3.0
20 November	1.0	1.3	1.1	3.3	2.6	3.1	1.3	2.0	1.9
19 February	-0.7	0.1	-0.4	-1.9	-0.1	-1.3	-0.2	-1.1	-0.9

SECURED HOUSING FINANCE  
COMMITMENTS.....

Period	Dwelling units	Value	Alterations and additions	Personal finance commitments	Commercial finance commitments	Lease finance commitments
	no.	\$m	\$m	\$m	\$m	\$m
ANNUAL						
1992-93	36 960	2 569.5	102.8	1 656.9	5 122.5	249.5
1993-94	45 725	3 387.9	221.8	1 840.3	5 467.2	250.6
1994-95	36 429	2 879.7	242.2	2 152.2	5 405.6	271.4
1995-96	38 707	2 982.2	240.7	2 215.5	6 516.2	265.7
1996-97	36 661	2 956.1	188.1	2 469.2	6 092.4	232.0
1997-98	37 379	3 129.7	139.5	2 763.9	6 486.4	267.3
PERCENTAGE CHANGE FROM PREVIOUS YEAR						
1992-93	16.4	23.3	15.8	13.7	-23.2	-2.6
1993-94	23.7	31.9	115.7	11.1	6.7	0.5
1994-95	-20.3	-15.0	9.2	16.9	-1.1	8.3
1995-96	6.3	3.6	-0.6	2.9	20.5	-2.1
1996-97	-5.3	-0.9	-21.9	11.5	-6.5	-12.7
1997-98	-2.0	5.9	-25.8	11.9	6.5	15.2
MONTHLY						
<b>1997-98</b>						
January	2 515	207.1	8.6	196.5	378.8	15.3
February	3 107	254.1	10.3	209.4	409.2	18.6
March	3 349	282.8	15.8	250.9	518.2	24.2
April	3 227	271.5	12.7	227.6	466.3	16.1
May	3 054	258.0	12.1	235.6	456.3	23.0
June	3 581	307.0	14.0	265.9	779.2	37.5
<b>1998-99</b>						
July	3 144	269.0	12.0	249.6	505.2	32.3
August	2 787	233.0	9.0	248.1	490.4	15.5
September	2 807	242.0	9.0	248.8	669.0	16.4
October	2 685	238.0	11.0	237.0	457.3	15.3
November	3 000	278.0	11.0	256.2	521.2	22.6
December	3 151	294.0	14.0	274.2	574.0	17.4
January	2 392	216.0	10.0	236.6	309.9	21.8
February	3 019	274.0	10.0	255.5	487.2	19.3
March	3 719	345.0	15.0	321.3	880.1	24.6
PERCENTAGE CHANGE FROM PREVIOUS MONTH						
<b>1997-98</b>						
January	-21.7	-24.6	-14.3	-15.8	-54.4	-23.5
February	23.5	22.3	15.4	6.6	8.0	21.6
March	7.8	11.3	53.7	19.9	26.6	30.3
April	-3.6	-4.0	-20.0	-9.3	-10.0	-33.4
May	-5.4	-5.0	-4.7	3.5	-2.1	42.9
June	17.3	19.0	16.1	12.9	70.8	62.7
<b>1998-99</b>						
July	-12.2	-12.4	-14.3	-6.1	-35.2	-13.8
August	-11.4	-13.4	-25.0	-0.6	-2.9	-51.9
September	0.7	3.9	0.0	0.3	36.4	5.3
October	-4.3	-1.7	22.2	-4.8	-31.6	-6.3
November	11.7	16.8	0.0	8.1	14.0	47.4
December	5.0	5.8	27.3	7.0	10.1	-22.8
January	-24.1	-26.5	-28.6	-13.7	-46.0	25.2
February	26.2	26.9	0.0	8.0	57.2	-11.7
March	23.2	25.9	50.0	25.8	80.6	27.5

## PUBLICATIONS SOURCE INDEX

- (1) *Australian National Accounts, Quarterly State Details* (Cat. no. 5206.0.40.001)
- (2) *International Merchandise Trade, Australia* (Cat. no. 5422.0) Quarterly
- (3) *Retail Trade, Australia* (Cat. no. 8501.0) Monthly
- (4) *New Motor Vehicles Registrations, Australia, Preliminary* (Cat. no. 9301.0) Monthly
- (5) *State Estimates of Private New Capital Expenditure* (Cat. no. 5646.0) Quarterly
- (6) *Tourist Accommodation, Australia* (Cat. no. 8635.0) Quarterly
- (7) *Building Approvals, Australia* (Cat. no. 8731.0) Monthly
- (8) *Building Activity, Australia* (Cat. no. 8752.0) Quarterly
- (8a) *Building Activity, Australia, Dwelling Unit Commencements, Preliminary* (Cat. no. 8750.0) Quarterly
- (9) *Engineering Construction Activity, Australia* (Cat. no. 8762.0) Quarterly
- (10) *Manufacturing Production, Australia, Preliminary* (Cat. no. 8301.0) Quarterly
- (11) *Livestock Products, Australia* (Cat. no. 7215.0) Quarterly
- (12) *Actual and Expected Private Mineral Exploration, Australia* (Cat. no. 8412.0) Quarterly
- (13) *Consumer Price Index* (Cat. no. 6401.0) Quarterly
- (14) *Price Index of Materials Used in House Building, Six State Capital Cities and Canberra* (Cat. no. 6408.0) Quarterly
- (15) *Price Index of Materials Used in Building Other Than House Building, Six State Capital Cities and Canberra* (Cat. no. 6407.0) Quarterly
- (16) *House Price Indexes: Eight Capital Cities* (Cat. no. 6416.0) Quarterly
- (17) *Australian Demographic Statistics* (Cat. no. 3101.0) Quarterly
- (18) *Labour Force, Australia, Preliminary* (Cat. no. 6202.0) Monthly
- (19) *Job Vacancies and Overtime, Australia* (Cat. no. 6354.0) Quarterly
- (20) *Industrial Disputes, Australia* (Cat. no. 6321.0) Monthly
- (21) Unpublished overseas arrival and departure statistics on microfiche
- (22) *Average Weekly Earnings, States and Australia* (Cat. no. 6302.0) Quarterly
- (23) *Wage Cost Index, Australia* (Cat. no. 6345.0) Quarterly
- (24) *Housing Finance for Owner Occupation, Australia* (Cat. no. 5609.0) Monthly
- (25) Unpublished statistics available from PC AUSSTATS
- (26) *Reserve Bank of Australia Bulletin*

## SELF-HELP ACCESS TO STATISTICS

*DIAL-A-STATISTIC* For current and historical Consumer Price Index data, call 1902 981 074.  
For the latest figures for National Accounts, Balance of Payments, Labour Force, Average Weekly Earnings, Estimated Resident Population and the Consumer Price Index call 1900 986 400.  
These calls cost 75c per minute.

*INTERNET* [www.abs.gov.au](http://www.abs.gov.au)

*LIBRARY* A range of ABS publications is available from public and tertiary libraries Australia wide. Contact your nearest library to determine whether it has the ABS statistics you require.

## WHY NOT SUBSCRIBE?

*PHONE* +61 1300 366 323

*FAX* +61 3 9615 7848

## CONSULTANCY SERVICES

ABS offers consultancy services on a user pays basis to help you access published and unpublished data. Data that are already published and can be provided within 5 minutes is free of charge. Statistical methodological services are also available. Please contact:

<i>City</i>	<i>By phone</i>	<i>By fax</i>
Canberra	02 6252 6627	02 6207 0282
Sydney	02 9268 4611	02 9268 4668
Melbourne	03 9615 7755	03 9615 7798
Brisbane	07 3222 6351	07 3222 6283
Perth	08 9360 5140	08 9360 5955
Adelaide	08 8237 7400	08 8237 7566
Hobart	03 6222 5800	03 6222 5995
Darwin	08 8943 2111	08 8981 1218

*POST* Client Services, ABS, PO Box 10, Belconnen ACT 2616

*EMAIL* [client.services@abs.gov.au](mailto:client.services@abs.gov.au)



2130740006999  
ISSN 1039-8880

RRP \$19.00